

DOC NUMBER	RSPOPCPA/CU/MAY2024/REV3
Version	Version 3
Revision Date	May 2024

From | Control Union Malaysia Sdn Bhd,
PORT TECH TOWER, LEVEL 17, Unit, No : 1, Jalan Tiara 3, Bandar Baru Klang, 41150 Klang,
Selangor, Malaysia

Subject | **PUBLIC ANNOUNCEMENT OF RECERTIFICATION AUDIT RSPO PRINCIPLE AND CRITERIA OF SD GUTHRIE BERHAD (TANAH MERAH)**

Date | **24th FEBRUARY 2025**

Dear Sir/Madam,

Sd Guthrie Berhad (Tanah Merah), Malaysia plantation company, has applied to Control Union Malaysia Sdn Bhd to carryout re-certification activities in accordance with the RSPO Principle and Criteria, as endorsed by RSPO Board of Governors on 7th November 2019, of its palm oil production.

The **Recertification Audit** is planned to commence on **4th March 2025** and will be completed on **8th March 2025**.

Applicant	SD GUTHRIE BERHAD (TANAH MERAH)
Contact details	MDM SHYLAJA DEVI VASUDEVAN NAIR HEAD OF SUSTAINABILITY COMPLIANCE UNIT, GROUP SUSTAINABILITY DEPARTMENT (GSD) LEVEL 11, MAIN BLOCK, PLANTATION TOWER, NO.2, JALAN PJU 1A/7, ARA DAMANSARA, 47301 PETALING JAYA, SELANGOR, MALAYSIA 603-78484000 shylaja.vasudevan@sdguthrie.com
RSPO Membership Number	1-0008-04-000-00
RSPO PalmTrace ID	RSPO_PO1000000098
Supply Chain Model	<u>IP/MB</u>
Any NPP Submission?	YES <input type="checkbox"/> NO <input checked="" type="checkbox"/>
NPP Status	If Yes, to check with RSPO
Are there any RaCP?	YES <input type="checkbox"/> NO <input checked="" type="checkbox"/> (This is required to check if there are any liabilities)
Brief information about Applicant	The plantation management unit audited is known as SD Guthrie Plantation Berhad - Strategic Operating Unit (SOU) 14 Tanah Merah consists of the Tanah Merah Palm Oil Mill and 3 supply base estates. Tanah Merah Complex is located in Negeri Sembilan, Malaysia.

Palm Oil Mill (POM) for this Assessment (Delete if not applicable)						
Name of Palm Oil Mill	Mill Capacity	Location	GPS reference		Forecasted Annual output (MT)	
(POM)	MT/Hr	Address	Longitude	Latitude	CPO	Palm Kernel
Tanah Merah POM	30	Kilang Kelapa Sawit Tanah Merah, P.O.Box 45, 71007, Port Dickson, Negeri Sembilan	101°47'34.03" E	2°39'19.09" N	23,689.92	5,863.84

ASSOCIATED SUPPLY BASE OF FFB TO THE ABOVE POM TO BE INCLUDED IN THIS ASSESSMENT (Delete if not applicable)							
Name of estate / association	Location	GPS reference		Area Summary (Ha)		Annual Estimation FFB (MT)	
	Address	Longitude	Latitude	Total	Mature		
Tanah Merah Estate	Ladang Tanah Merah, 71009 Port Dickson, NS	N2° 39" 00"	E101° 45" 00"	4,341.73	3,150.85	117,276.87	
Bukit Pelandok Estate	Ladang Bukit Pelandok, 71009 Port Dickson, NS	N2° 39" 00"	E101° 45" 00"	1,859.31	1,359.75	117,276.87	
Labu Estate	Ladang Labu, 71900 Labu, Negeri Sembilan	E 101°49.05 359'	N 02° 45.05727'	4,528.15	3,997.50	78,509.19	
Total				10,729.19	8508.10	313,062.93	

DETAILS OF THE AUDIT TEAM		
AUDIT ROLES	NAME	BACKGROUND & QUALIFICATION
LEAD AUDITOR	Mathan Mahalingam	Graduated from Universiti Sains Malaysia (USM), majoring in Bachelor of Business Management (hons), with more than 15 years of working experience in Oil Palm Plantations in Malaysia, Central Africa and Papua New Guinea (PNG). Complete and certified RSPO Lead Auditor P&C Course, MSPO Lead Auditor Course MS 2530:2013 and ISO 9001, ISO 14001 & ISO 45001 Lead Auditor and SA8000. Familiarity with health and safety, best practices and implementation of social aspects in plantations.
SUPPORTING ASSESSOR 1	Jasmandy Syahrul	Graduated in B. Sc. in Plantation Technology and Management from Universiti Teknologi Mara. He has 9 years working experience in oil palm plantation both in field operation and sustainability department. Successfully completed Lead Auditor training for RSPO P&C, MSPO OPMC, MSPO SCCS, Integrated Management System (IMS) (ISO 9001, ISO 14001, ISO 45001), ISO 14064 1-3, SA8000, SMETA (6.0), SMETA & SVA Defect Guidance Training, SEDEX Virtual Assessment, QMS-ISO 17021-3, OHSMS – ISO 17021-10, EMS-ISO 17021-2. He is able to communicate in English and Bahasa Malaysia.
SUPPORTING ASSESSOR 2	Chan Shi Lie	Graduated from Universiti Utara Malaysia (UUM) in Bachelor of Media Technology majoring in broadcasting. 6 years working experience in plantation company with various departments such as estate administrative and sustainability department. Has successfully completed certified Lead Auditor course for MSPO P&C, MSPO SCCS, IMS ISO 9001, 45001 and 14001, SA8000, ISO 14064-3:2019, ISCC CORSIA,

		ISCC DE/EU and PLUS, ISCC Chain of Custody, ISCC Waste and Residue, and ISCC GHG. Able to communicate in Bahasa Malaysia, English and Mandarin.
--	--	---

Control Union Malaysia Sdn Bhd is a member of the Control Union - an international inspection and certification body. CUC performs assessments and certification in many agricultural based fields such as FSC, RSPO, and Organic production, Sustainable Textile Production, Organic Exchange, GLOBALGAP, HACCP, BRC, GMP. Control Union Malaysia Sdn Bhd is accredited for RSPO (RSPO-ACC-021) for the scope of P&C (Single Site & Group) and SCCS worldwide. When requested, a copy of the accreditation certificate can be obtained from CUC.

Stakeholder consultation is one of the most important parts in certification process; during which relevant national, regional as well as local stakeholders are asked to give their views and opinions as to whether the applicant's certification units comply with the requirements of the applicable National Interpretation.

We invite all stakeholders to take part in this consultation procedure as you can make a positive contribution to the certification decision. We ask you to raise any issues, both positive and negative, by sending a written response by mail, fax or by E-mail to our Control Union Malaysia Sdn Bhd office as indicated below.

For your guidance, you may consider the following points:

- Environmental protection.
- Biodiversity conservation.
- Opportunities for employment.
- Provision of housing, sanitation, amenities and educational support.
- Company approach to community development.
- Participation in decision making.
- Any other issue, both positive and negative that you consider may be of relevance to the assessment.
- Issues relating to other plantations owned by the company not included in this assessment.
- A copy of the applicable RSPO standard for the country, in which the assessment is being conducted, is available from www.rspo.org. Alternatively please ask Control Union Malaysia Sdn Bhd for a copy.

Your responses will be dealt with in complete confidentiality and will only be distributed to the appropriate persons within the organizations of CUC, ASI and RSPO.

When required your reply will remain confidential. Please add "Confidential" in your response and when preferred your response can be added as anonymous in the public summary of the report. In that case please also add "Anonymous" in your response.

If requested by you, the audit team will make the necessary arrangements to allow you to meet with them during the evaluation.

Please direct your comments to:

Control Union Malaysia Office	
Mohd Hairi Adris, Assistant Program Manager RSPO & MSPO, PORT TECH TOWER, LEVEL 17, Unit, No : 1, Jalan Tiara 3, Bandar Baru Klang, 41150 Klang, Selangor, Malaysia	
E-Mail:	mohdhairi@controlunion.com
Number:	+603 3000 4941

Comments received within 30 days from the date of this letter will be considered in this Assessment. Please include the following information should we need to contact you for clarification on any issues raised:

Name : _____

Address : _____

E-Mail : _____

Phone Number : _____

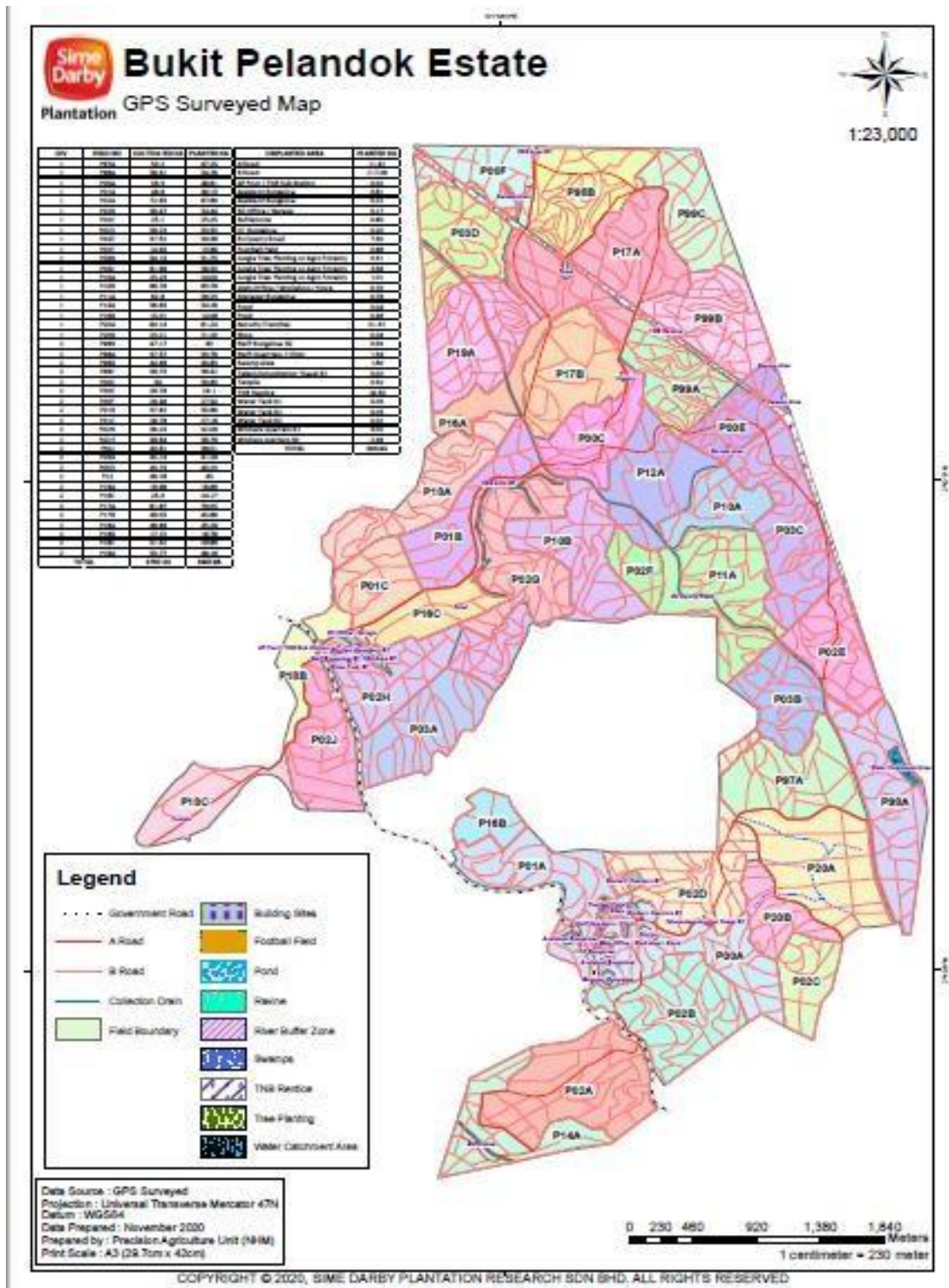
Summary of Issue : _____

We thank you for the participation and feedback.

Yours Sincerely,



Mohd Hairi Adris
Assistant Program Manager
RSPO & MSPO
Control Union Malaysia Sdn Bhd



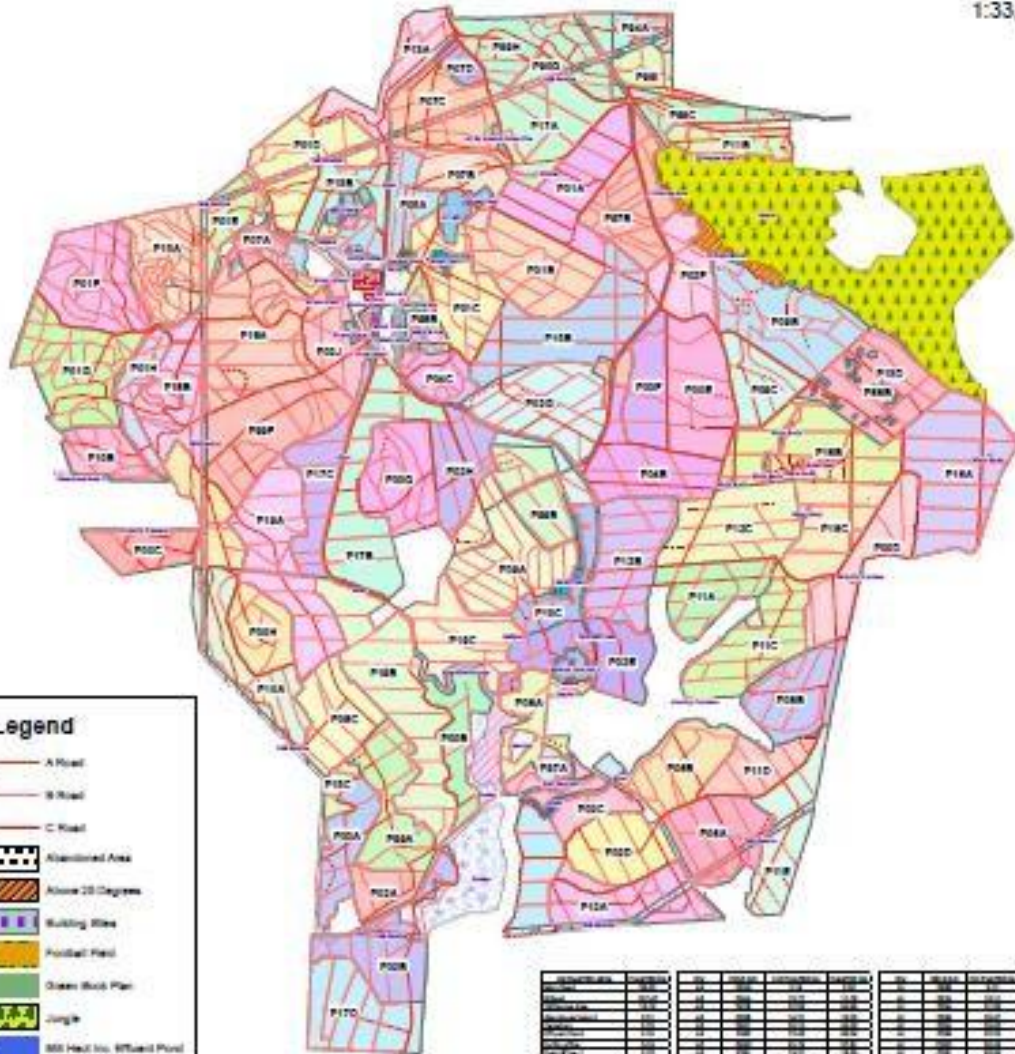


Tanah Merah Estate

GPS Surveyed Map



1:33,000

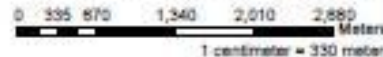


Legend

- A Road
- B Road
- C Road
- Abandoned Area
- Above 20 Degrees
- Building Site
- Football Field
- Green Buck Plan
- Jungle
- 800 Hect In. 875000 Pond
- Nursery CP
- Pond
- River
- River Buffer Zone
- Security Threshold
- Swamp
- TIRI Reserve
- Wide Cultivated Area

Parcel ID	Area (Ha)	Perimeter (m)	Area (Ha)	Perimeter (m)	Area (Ha)	Perimeter (m)	Area (Ha)	Perimeter (m)	Area (Ha)	Perimeter (m)
P101	1.2	150	1.5	180	1.8	210	2.1	240	2.4	270
P102	1.5	180	1.8	210	2.1	240	2.4	270	2.7	300
P103	1.8	210	2.1	240	2.4	270	2.7	300	3.0	330
P104	2.1	240	2.4	270	2.7	300	3.0	330	3.3	360
P105	2.4	270	2.7	300	3.0	330	3.3	360	3.6	390
P106	2.7	300	3.0	330	3.3	360	3.6	390	3.9	420
P107	3.0	330	3.3	360	3.6	390	3.9	420	4.2	450
P108	3.3	360	3.6	390	3.9	420	4.2	450	4.5	480
P109	3.6	390	3.9	420	4.2	450	4.5	480	4.8	510
P110	3.9	420	4.2	450	4.5	480	4.8	510	5.1	540
P111	4.2	450	4.5	480	4.8	510	5.1	540	5.4	570
P112	4.5	480	4.8	510	5.1	540	5.4	570	5.7	600
P113	4.8	510	5.1	540	5.4	570	5.7	600	6.0	630
P114	5.1	540	5.4	570	5.7	600	6.0	630	6.3	660
P115	5.4	570	5.7	600	6.0	630	6.3	660	6.6	690
P116	5.7	600	6.0	630	6.3	660	6.6	690	6.9	720
P117	6.0	630	6.3	660	6.6	690	6.9	720	7.2	750
P118	6.3	660	6.6	690	6.9	720	7.2	750	7.5	780
P119	6.6	690	6.9	720	7.2	750	7.5	780	7.8	810
P120	6.9	720	7.2	750	7.5	780	7.8	810	8.1	840
P121	7.2	750	7.5	780	7.8	810	8.1	840	8.4	870
P122	7.5	780	7.8	810	8.1	840	8.4	870	8.7	900
P123	7.8	810	8.1	840	8.4	870	8.7	900	9.0	930
P124	8.1	840	8.4	870	8.7	900	9.0	930	9.3	960
P125	8.4	870	8.7	900	9.0	930	9.3	960	9.6	990
P126	8.7	900	9.0	930	9.3	960	9.6	990	9.9	1020
P127	9.0	930	9.3	960	9.6	990	9.9	1020	10.2	1050
P128	9.3	960	9.6	990	9.9	1020	10.2	1050	10.5	1080
P129	9.6	990	9.9	1020	10.2	1050	10.5	1080	10.8	1110
P130	9.9	1020	10.2	1050	10.5	1080	10.8	1110	11.1	1140
P131	10.2	1050	10.5	1080	10.8	1110	11.1	1140	11.4	1170
P132	10.5	1080	10.8	1110	11.1	1140	11.4	1170	11.7	1200
P133	10.8	1110	11.1	1140	11.4	1170	11.7	1200	12.0	1230
P134	11.1	1140	11.4	1170	11.7	1200	12.0	1230	12.3	1260
P135	11.4	1170	11.7	1200	12.0	1230	12.3	1260	12.6	1290
P136	11.7	1200	12.0	1230	12.3	1260	12.6	1290	12.9	1320
P137	12.0	1230	12.3	1260	12.6	1290	12.9	1320	13.2	1350
P138	12.3	1260	12.6	1290	12.9	1320	13.2	1350	13.5	1380
P139	12.6	1290	12.9	1320	13.2	1350	13.5	1380	13.8	1410
P140	12.9	1320	13.2	1350	13.5	1380	13.8	1410	14.1	1440
P141	13.2	1350	13.5	1380	13.8	1410	14.1	1440	14.4	1470
P142	13.5	1380	13.8	1410	14.1	1440	14.4	1470	14.7	1500
P143	13.8	1410	14.1	1440	14.4	1470	14.7	1500	15.0	1530
P144	14.1	1440	14.4	1470	14.7	1500	15.0	1530	15.3	1560
P145	14.4	1470	14.7	1500	15.0	1530	15.3	1560	15.6	1590
P146	14.7	1500	15.0	1530	15.3	1560	15.6	1590	15.9	1620
P147	15.0	1530	15.3	1560	15.6	1590	15.9	1620	16.2	1650
P148	15.3	1560	15.6	1590	15.9	1620	16.2	1650	16.5	1680
P149	15.6	1590	15.9	1620	16.2	1650	16.5	1680	16.8	1710
P150	15.9	1620	16.2	1650	16.5	1680	16.8	1710	17.1	1740
P151	16.2	1650	16.5	1680	16.8	1710	17.1	1740	17.4	1770
P152	16.5	1680	16.8	1710	17.1	1740	17.4	1770	17.7	1800
P153	16.8	1710	17.1	1740	17.4	1770	17.7	1800	18.0	1830
P154	17.1	1740	17.4	1770	17.7	1800	18.0	1830	18.3	1860
P155	17.4	1770	17.7	1800	18.0	1830	18.3	1860	18.6	1890
P156	17.7	1800	18.0	1830	18.3	1860	18.6	1890	18.9	1920
P157	18.0	1830	18.3	1860	18.6	1890	18.9	1920	19.2	1950
P158	18.3	1860	18.6	1890	18.9	1920	19.2	1950	19.5	1980
P159	18.6	1890	18.9	1920	19.2	1950	19.5	1980	19.8	2010
P160	18.9	1920	19.2	1950	19.5	1980	19.8	2010	20.1	2040
P161	19.2	1950	19.5	1980	19.8	2010	20.1	2040	20.4	2070
P162	19.5	1980	19.8	2010	20.1	2040	20.4	2070	20.7	2100
P163	19.8	2010	20.1	2040	20.4	2070	20.7	2100	21.0	2130
P164	20.1	2040	20.4	2070	20.7	2100	21.0	2130	21.3	2160
P165	20.4	2070	20.7	2100	21.0	2130	21.3	2160	21.6	2190
P166	20.7	2100	21.0	2130	21.3	2160	21.6	2190	21.9	2220
P167	21.0	2130	21.3	2160	21.6	2190	21.9	2220	22.2	2250
P168	21.3	2160	21.6	2190	21.9	2220	22.2	2250	22.5	2280
P169	21.6	2190	21.9	2220	22.2	2250	22.5	2280	22.8	2310
P170	21.9	2220	22.2	2250	22.5	2280	22.8	2310	23.1	2340
P171	22.2	2250	22.5	2280	22.8	2310	23.1	2340	23.4	2370
P172	22.5	2280	22.8	2310	23.1	2340	23.4	2370	23.7	2400
P173	22.8	2310	23.1	2340	23.4	2370	23.7	2400	24.0	2430
P174	23.1	2340	23.4	2370	23.7	2400	24.0	2430	24.3	2460
P175	23.4	2370	23.7	2400	24.0	2430	24.3	2460	24.6	2490
P176	23.7	2400	24.0	2430	24.3	2460	24.6	2490	24.9	2520
P177	24.0	2430	24.3	2460	24.6	2490	24.9	2520	25.2	2550
P178	24.3	2460	24.6	2490	24.9	2520	25.2	2550	25.5	2580
P179	24.6	2490	24.9	2520	25.2	2550	25.5	2580	25.8	2610
P180	24.9	2520	25.2	2550	25.5	2580	25.8	2610	26.1	2640
P181	25.2	2550	25.5	2580	25.8	2610	26.1	2640	26.4	2670
P182	25.5	2580	25.8	2610	26.1	2640	26.4	2670	26.7	2700
P183	25.8	2610	26.1	2640	26.4	2670	26.7	2700	27.0	2730
P184	26.1	2640	26.4	2670	26.7	2700	27.0	2730	27.3	2760
P185	26.4	2670	26.7	2700	27.0	2730	27.3	2760	27.6	2790
P186	26.7	2700	27.0	2730	27.3	2760	27.6	2790	27.9	2820
P187	27.0	2730	27.3	2760	27.6	2790	27.9	2820	28.2	2850
P188	27.3	2760	27.6	2790	27.9	2820	28.2	2850	28.5	2880
P189	27.6	2790	27.9	2820	28.2	2850	28.5	2880	28.8	2910
P190	27.9	2820	28.2	2850	28.5	2880	28.8	2910	29.1	2940
P191	28.2	2850	28.5	2880	28.8	2910	29.1	2940	29.4	2970
P192	28.5	2880	28.8	2910	29.1	2940	29.4	2970	29.7	3000
P193	28.8	2910	29.1	2940	29.4	2970	29.7	3000	30.0	3030
P194	29.1	2940	29.4	2970	29.7	3000	30.0	3030	30.3	3060
P195	29.4	2970	29.7	3000	30.0	3030	30.3	3060	30.6	3090
P196	29.7	3000	30.0	3030	30.3	3060	30.6	3090	30.9	3120
P197	30.0	3030	30.3	3060	30.6	3090	30.9	3120	31.2	3150
P198	30.3	3060	30.6	3090	30.9	3120	31.2	3150	31.5	3180
P199	30.6	3090	30.9	3120	31.2	3150	31.5	3180	31.8	3210
P200	30.9	3120	31.2	3150	31.5	3180	31.8	3210	32.1	3240

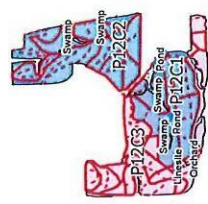
Data Source : GPS Surveyed
 Projection : Universal Transverse Mercator 47N
 Datum : WGS84
 Date Prepared : February 2021
 Prepared by : Precision Agriculture Unit (NEM)
 Print Scale : A3 (29.7cm x 42cm)



COPYRIGHT © 2021, SIME DARBY PLANTATION RESEARCH SDN BHD. ALL RIGHTS RESERVED

101°43'30"E 101°44'00"E 101°44'30"E 101°45'00"E 101°45'30"E 101°46'00"E 101°46'30"E 101°47'00"E 101°47'30"E 101°48'00"E 101°48'30"E 101°49'00"E 101°49'30"E 101°50'00"E 101°50'30"E 101°51'00"E 101°51'30"E 101°52'00"E 101°52'30"E 101°53'00"E 101°53'30"E 101°54'00"E 101°54'30"E 101°55'00"E 101°55'30"E 101°56'00"E 101°56'30"E 101°57'00"E 101°57'30"E 101°58'00"E 101°58'30"E 101°59'00"E 101°59'30"E 102°00'00"E

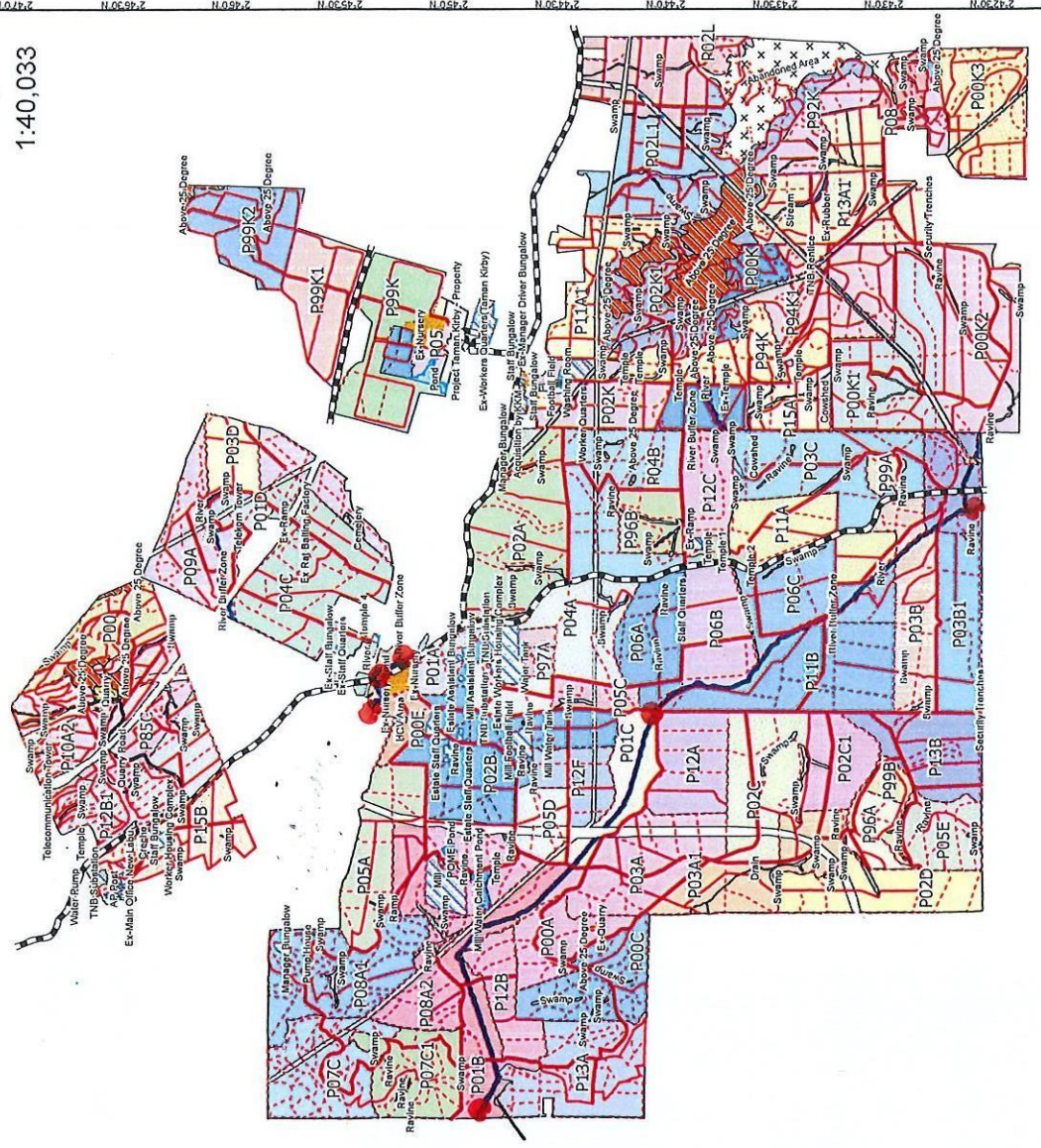
Sime Darby
Plantation
Labu Estate
 GPS Survey Map



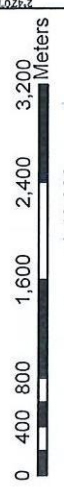
1:40,033

Legend

- A Road
- B Road
- C Road
- Government Road
- MA Road
- Abandoned Area
- Above 25 Degrees
- Building Sites
- Fallow Areas
- Football Field
- Orchard
- Pond
- Quarry / Rocky
- Ravine
- River Buffer Zone
- River
- Swamps
- TNB Rentice
- Water Catchment Area



Projection : Universal Transverse Mercator 47N
 Datum : WGS84
 Data Prepared : November 2023
 Prepared by : Precision Agriculture Unit (NS)
 Print Scale : A3 (29.7cm x 42cm)



1:40,033