

From | Control Union Malaysia Sdn Bhd,
PORT TECH TOWER, LEVEL 17, Unit, No : 1, Jalan Tiara 3, Bandar Baru Klang, 41150 Klang,
Selangor, Malaysia

Subject | **PUBLIC ANNOUNCEMENT OF RECERTIFICATION AUDIT RSPO PRINCIPLE AND CRITERIA OF SD
GUTHRIE BERHAD (GUNUNG MAS)**

Date | **24th JANUARY 2025**

Dear Sir/Madam,

Sd Guthrie Berhad (Gunung Mas), Malaysia plantation company, has applied to Control Union Malaysia Sdn Bhd to carryout re-certification activities in accordance with the RSPO Principle and Criteria, as endorsed by RSPO Board of Governors on 7th November 2019, of its palm oil production.

The **Recertification Audit** is planned to commence on **10th March 2025** and will be completed on **14th March 2025**.

Applicant	SD GUTHRIE BERHAD (GUNUNG MAS)
Contact details	MDM SHYLAJA DEVI VASUDEVAN NAIR HEAD OF SUSTAINABILITY COMPLIANCE UNIT, GROUP SUSTAINABILITY DEPARTMENT (GSD) LEVEL 11, MAIN BLOCK, PLANTATION TOWER, NO.2, JALAN PJU 1A/7, ARA DAMANSARA, 47301 PETALING JAYA, SELANGOR, MALAYSIA 603-78484000 shylaja.vasudevan@sdguthrie.com
RSPO Membership Number	1-0008-04-000-00
RSPO PalmTrace ID	RSPO_PO1000000183
Supply Chain Model	IP
Any NPP Submission?	YES <input type="checkbox"/> NO <input checked="" type="checkbox"/>
NPP Status	If Yes, To check with RSPO
Are there any RaCP?	YES <input type="checkbox"/> NO <input checked="" type="checkbox"/> (This is required to check if there are any liabilities)
Brief information about Applicant	The plantation management unit audited is known as SD Guthrie Plantation Berhad - Strategic Operating Unit (SOU) 21 Gunung Mas consists of the Gunung Mas Palm Oil Mill and 5 supply base estates. Gunung Mas Complex is located in Kluang, Johor Darul Ta'zim, Malaysia.

Palm Oil Mill (POM) for this Assessment (Delete if not applicable)						
Name of Palm Oil Mill	Mill Capacity	Location	GPS reference		Forecasted Annual output (MT)	
(POM)	MT/Hr	Address	Longitude	Latitude	CPO	Palm Kernel
Gunung Mas POM	60	KKS Gunung Mas, P.O.Box No. 524, 86009 Kluang, Johor	E 103.138	N 2.244	38,766.95	9,339.31

ASSOCIATED SUPPLY BASE OF FFB TO THE ABOVE POM TO BE INCLUDED IN THIS ASSESSMENT (Delete if not applicable)						
Name of estate / association	Location	GPS reference		Area Summary (Ha)		Annual Estimation FFB (MT)
	Address	Longitude	Latitude	Total	Mature	
Gunung Mas Estate	Ladang Gunung Mas, K/B No.512, 86009 Kluang, Johor	E 103.137352	N 2.254187	3,458.95	2,475.37	41,234.01
Kempas Klebang Estate	Ladang Kempas Klebang, K/B No. 105, 86609 Paloh, Johor	E 103.173134	N 2.211847	2,460.12	1,647.35	32,900.00
Bukit Paloh Estate	Ladang Bukit Paloh, K/B No.107, 86609 Paloh, Johor	E 103.177856	N 2.140314	3,082.84	2,121.08	37,454.00
CEP Niyor Estate	Ladang CEP Niyor, PO BOX 514, Kluang, Johor	E.103.268274	N.2.093834	1,955.19	1,517.18	32,150.00
Yong Peng Estate	Ladang Yong Peng, 83700 Yong Peng, Johor	E 103.117490	N 2.043587	2,975.41	1,796.93	32,475.40
Total				13,932.51	9,557.91	176,213.41

DETAILS OF THE AUDIT TEAM		
AUDIT ROLES	NAME	BACKGROUND & QUALIFICATION
LEAD AUDITOR	Muhammad Fadzli Bin Masran	Graduated in Bachelor of Forestry Science at University Putra Malaysia. Started the career as Assistant Manager at Kulim Plantations Sdn. Bhd. managing the day-to-day plantation operations. Had accumulated more than 10 years of sustainability implementation experience at Kulim Plantation, including workers' welfare, workers' occupational, health & safety, environment conservation and protection at buffer areas and continuous improvement management plans. Also accumulated auditing experience when be internal auditor for ISO9001 and ISO14001 at Kulim Plantations. Started the career as an auditor with in previous company, BSI Services Malaysia Sdn. Bhd. where involved in RSPO and MSPO audits. As competent Lead Auditor for Roundtable Sustainability Palm Oil (RSPO) and Malaysian Sustainability Palm Oil (MSPO) with 5 years auditing experience in Malaysia.
SUPPORTING ASSESSOR 1	Yugeswaran Muthaiah	Graduated from Universiti Malaysia Terengganu (UMT), majoring in B. Sc. Nautical Science & Maritime Transportation with 7 years working experience in Palm Oil Plantation at Malaysia and Papua New Guinea (PNG). Successfully completed certified Lead Auditor Course for MSPO P&C, MSPO SCCS, ISO 9001:2015, ISO 14001:2015, Forest Stewardship Council (FSC) Chain of Custody, Programme for the Endorsement of Forest Certification (PEFC) Chain of

		Custody and SA8000. Sound knowledge on health and safety aspect and best practices implementation in plantation.
SUPPORTING ASSESSOR 2	Mohd Ab Raouf bin Asis	A freelance auditor from January to December 2024, conducting audits for the MSPO Scheme. Previously served as a Lead Auditor from 2016 to 2023 for RSPO, MSPO, and ISO schemes at SIRIM QAS International Sdn Bhd. Prior to that, worked as an Assistant Estate Manager from 2009 to 2016 at SD Guthrie Plantation Berhad, formerly known as Sime Darby Plantation Bhd. Holds a Bachelor's Degree in Technology Management from UTHM, graduating in 2007. Successfully completed the MSPO MS 2530:2022 Lead Auditor Course in 2024, as well as the Lead Assessor Courses for Quality Management System ISO 9001:2015, OHSMS ISO 18001:2007, and Environmental Management System ISO 14001:2015 in 2016. Additionally, successfully attended the RSPO Lead Assessor Course conducted by David Ogg in 2021. Most recently, completed the Integrated Management Systems (IMS) Lead Assessor Training Course, covering ISO 9001:2015 QMS, ISO 14001:2015 EMS, and ISO 45001:2018 OHS-MS, in 2025.

Control Union Malaysia Sdn Bhd is a member of the Control Union - an international inspection and certification body. CUC performs assessments and certification in many agricultural based fields such as FSC, RSPO, and Organic production, Sustainable Textile Production, Organic Exchange, GLOBALGAP, HACCP, BRC, GMP. Control Union Malaysia Sdn Bhd is accredited for RSPO (RSPO-ACC-021) for the scope of P&C (Single Site & Group) and SCCS worldwide. When requested, a copy of the accreditation certificate can be obtained from CUC.

Stakeholder consultation is one of the most important parts in certification process; during which relevant national, regional as well as local stakeholders are asked to give their views and opinions as to whether the applicant's certification units comply with the requirements of the applicable National Interpretation.

We invite all stakeholders to take part in this consultation procedure as you can make a positive contribution to the certification decision. We ask you to raise any issues, both positive and negative, by sending a written response by mail, fax or by E-mail to our Control Union Malaysia Sdn Bhd office as indicated below.

For your guidance, you may consider the following points:

- Environmental protection.
- Biodiversity conservation.
- Opportunities for employment.
- Provision of housing, sanitation, amenities and educational support.
- Company approach to community development.
- Participation in decision making.
- Any other issue, both positive and negative that you consider may be of relevance to the assessment.
- Issues relating to other plantations owned by the company not included in this assessment.
- A copy of the applicable RSPO standard for the country, in which the assessment is being conducted, is available from www.rspo.org. Alternatively please ask Control Union Malaysia Sdn Bhd for a copy.

Your responses will be dealt with in complete confidentiality and will only be distributed to the appropriate persons within the organizations of CUC, ASI and RSPO.

When required your reply will remain confidential. Please add "Confidential" in your response and when preferred your response can be added as anonymous in the public summary of the report. In that case please also add "Anonymous" in your response.

If requested by you, the audit team will make the necessary arrangements to allow you to meet with them during the evaluation.

Please direct your comments to:

Control Union Malaysia Office
Mohd Hairi Adris,
Assistant Program Manager RSPO & MSPO,
PORT TECH TOWER, LEVEL 17, Unit, No : 1,
Jalan Tiara 3, Bandar Baru Klang, 41150
Klang, Selangor,
Malaysia

E-Mail: mohdhairi@controlunion.com
Number: +603 3000 4941

Comments received within 30 days from the date of this letter will be considered in this Assessment. Please include the following information should we need to contact you for clarification on any issues raised:

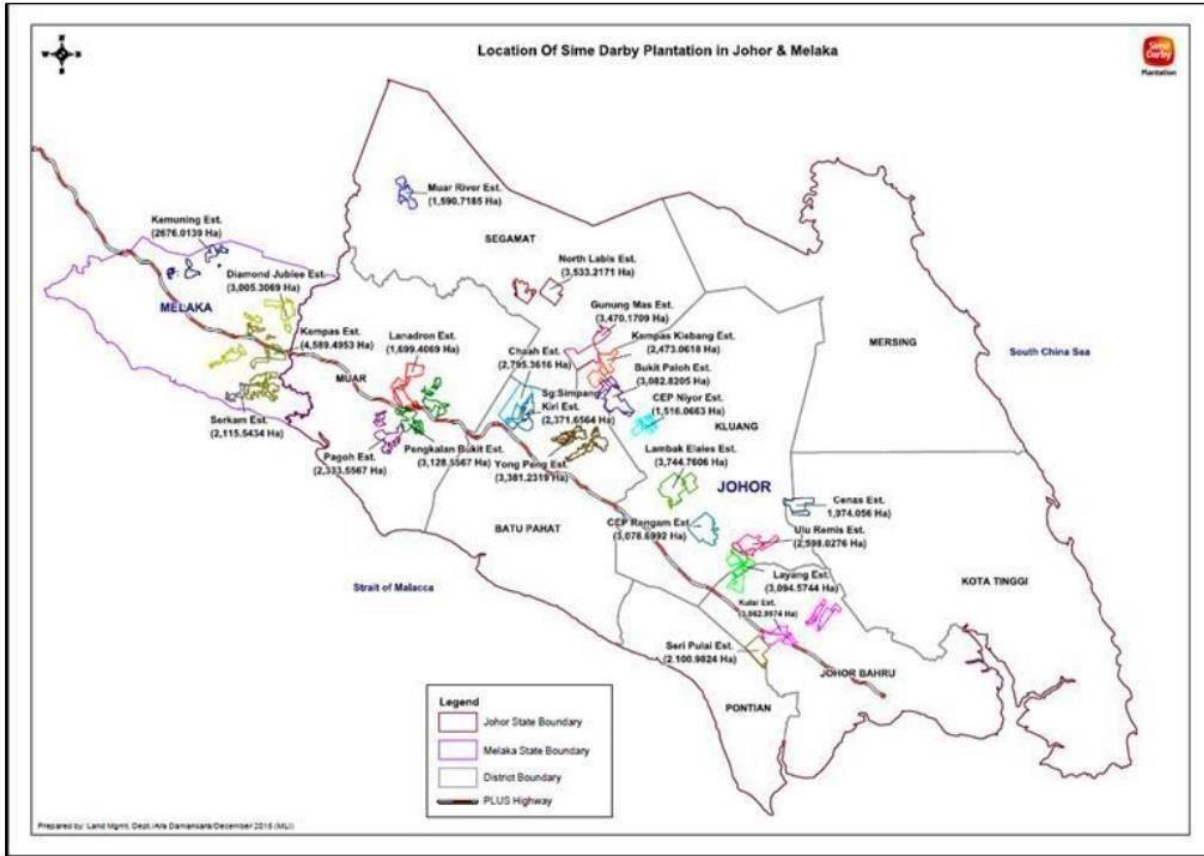
Name : _____
Address : _____
E-Mail : _____
Phone Number : _____
Summary of Issue : _____

We thank you for the participation and feedback.

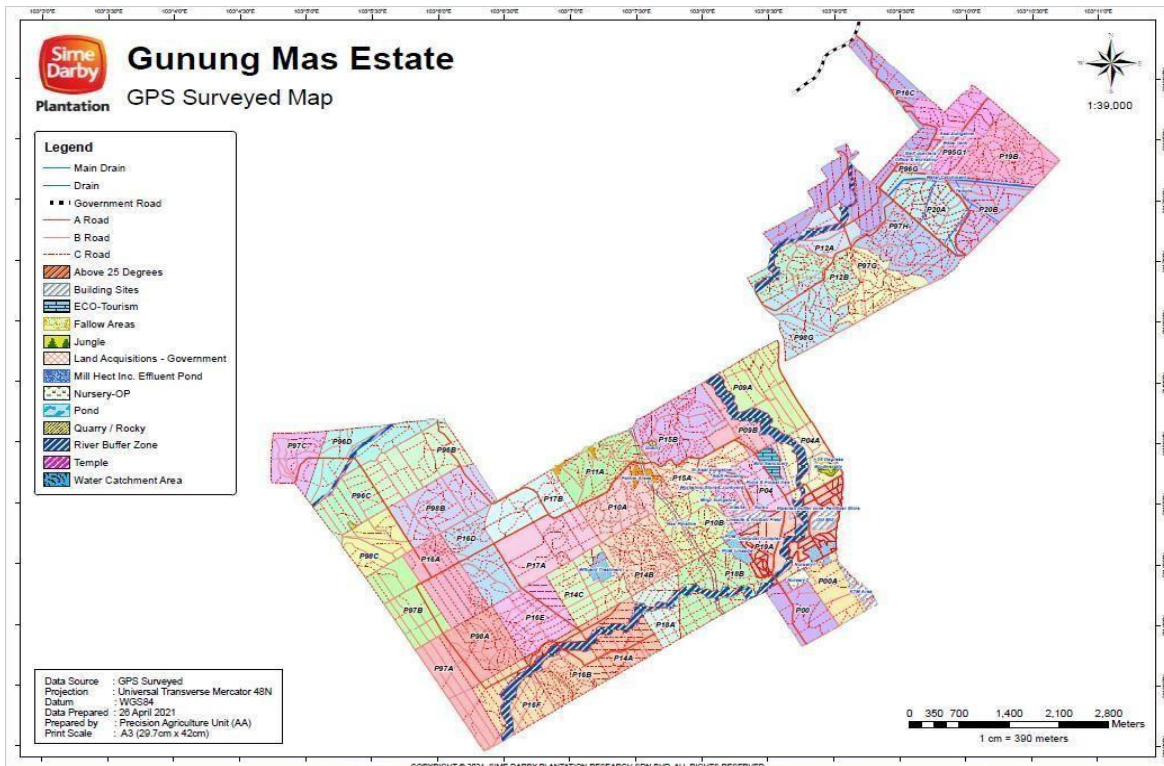
Yours Sincerely,

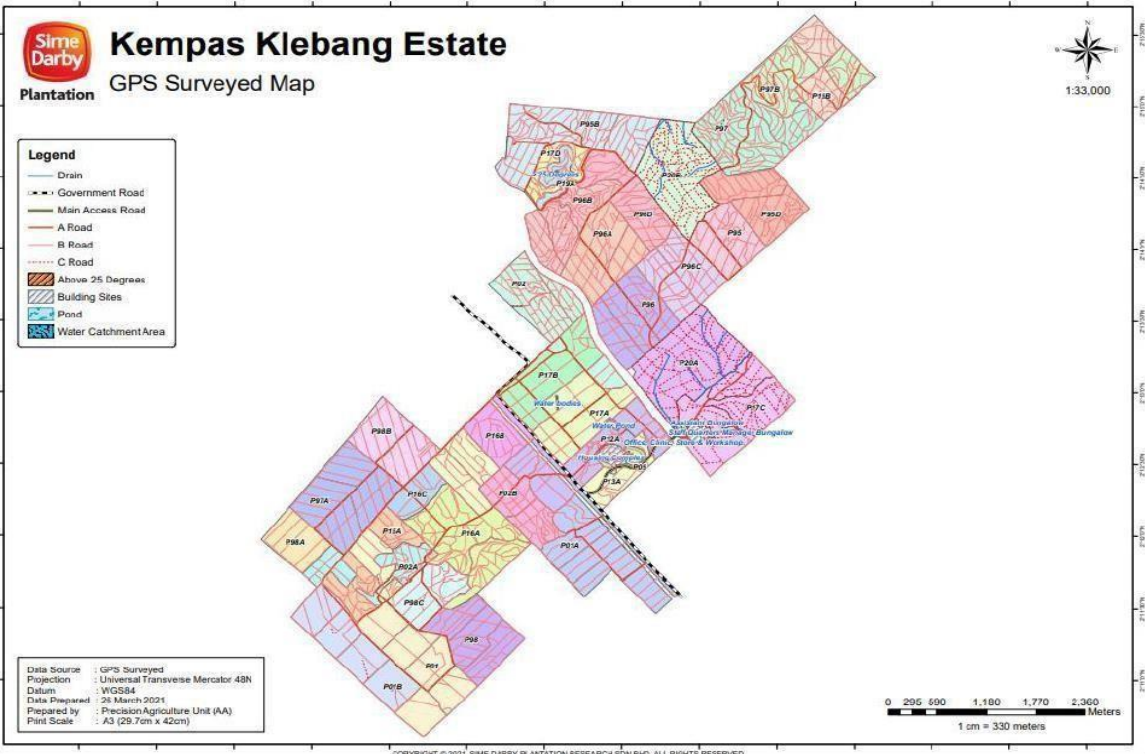


Mohd Hairi Adris
Assistant Program Manager
RSPO & MSPO
Control Union Malaysia Sdn Bhd



Maps of Sime Darby Plantation Berhad Estates in Johor, Malaysia







Bukit Paloh Estate

Manuring Map

Plantation

