

Date : 31st March 2026

Public Notification :

RSPO Intial Certification (MS B) Audit of Koperasi Mitra Inti Sumber Makmur (RSPO Membership : 1-0549-25-000-00)

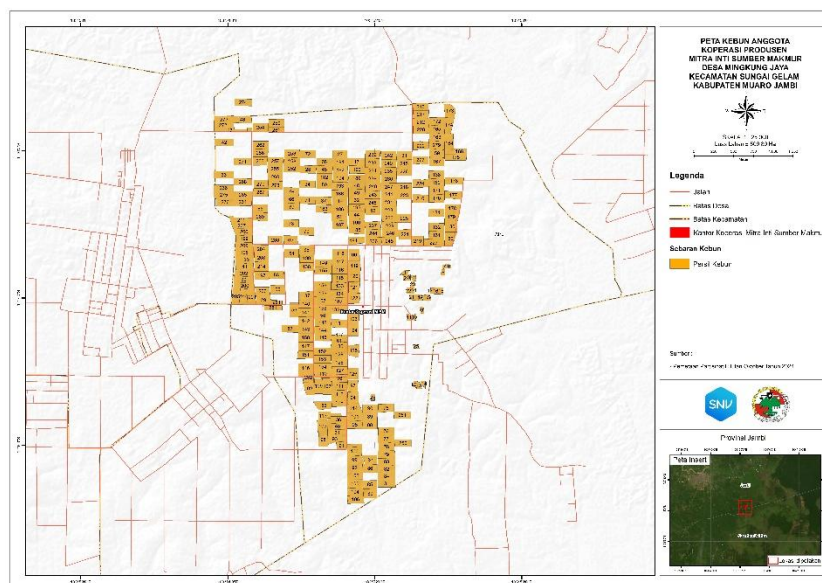
Dear Stakeholders,

This is to inform that the above ISH Group with RSPO membership number : 1-0549-25-000-00 had appointed CB PT TUV Rheinland Indonesia to conduct the Initial Certification (MS B) Audit of the group located at Desa Mingkung Jaya Kecamatan Sungai Gelam Kabupaten Muaro Jambi Provinsi Jambi. The audit will be conducted from 22 to 26 June 2026 against the requirements of RSPO Independent Smallholder 2024 (Version 2.0).

Prisma Information
 Management Unit: MU26-000704
 Trading Account ID: TA26-000763

Name of Group Manager	Group Manager Address	ISH Group Location	GPS Reference		
			Latitude	Garis Bujur	
Fatchurrohman	Desa Mingkung Jaya	Desa Mingkung Jaya	North	-1,78425	103,8654
			South	-1,78446	103,8654
			East	-1,78446	103,8652
			West	-1,78425	103,8652

Location maps of the ISH Groups



Location maps of the ISH Groups

List of Group Members

NO	Name of Farmer	Location	GPS Reference		Area Summary (Ha)*		Forecasted Annual FFB Production (MT)*	Any Liabilities?	Date of Joining Group
			Latitude	Longitude	Total Certified Area	Total Planted Area			
1	Sugiono	Mingkung Jaya	-1,78046	103,8701	0,439298	0,439298	12000	No	24 December 2025
2	Mustofa Hidayat	Mingkung Jaya	-1,78098	103,8701	0,361822	0,361822	12000	No	24 December 2025
3	Wahyuni	Mingkung Jaya	-1,781	103,8705	0,341674	0,341674	12000	No	24 December 2025
4	Wahid Waluyo	Mingkung Jaya	-1,78106	103,8711	0,3761	0,3761	12000	No	24 December 2025
5	TRI MULYONO 1	Mingkung Jaya	-1,78328	103,8728	0,366576	0,366576	12000	No	24 December 2025
6	Ririn Prasetya Ningrum	Mingkung Jaya	-1,77973	103,8751	0,249053	0,249053	12000	No	24 December 2025
7	Erna Ida Lestari	Mingkung Jaya	-1,77976	103,8746	0,262689	0,262689	12000	No	24 December 2025
8	Dukah	Mingkung Jaya	-1,78041	103,8744	0,361256	0,361256	12000	No	24 December 2025
9	TRI MULYONO 2	Mingkung Jaya	-1,7847	103,872	0,398903	0,398903	12000	No	24 December 2025
10	TRI MULYONO 3	Mingkung Jaya	-1,78549	103,8711	0,417918	0,417918	12000	No	24 December 2025

11	TRI MULYONO 4	Mingkung Jaya	-1,78552	103,8706	0,423514	0,423514	12000	No	24 December 2025
12	TRI MULYONO 5	Mingkung Jaya	-1,79314	103,8712	0,352652	0,352652	12000	No	24 December 2025
13	TRI MULYONO 6	Mingkung Jaya	-1,79325	103,8717	0,419725	0,419725	12000	No	24 December 2025
14	TRI MULYONO 7	Mingkung Jaya	-1,79312	103,8722	0,396155	0,396155	12000	No	24 December 2025
15	SUJARTO 2	Mingkung Jaya	-1,78252	103,8742	0,452471	0,452471	12000	No	24 December 2025
16	SAWIATUN	Mingkung Jaya	-1,78252	103,8737	0,437944	0,437944	12000	No	24 December 2025
17	Sakun	Mingkung Jaya	-1,7825	103,8732	0,357076	0,357076	12000	No	24 December 2025
18	M. YANI 4	Mingkung Jaya	-1,7833	103,8724	0,371777	0,371777	12000	No	24 December 2025
19	M. YANI 5	Mingkung Jaya	-1,78327	103,8718	0,384616	0,384616	12000	No	24 December 2025
20	Yutik Imaroh	Mingkung Jaya	-1,78326	103,8714	0,340772	0,340772	12000	No	24 December 2025
21	M. YANI 6	Mingkung Jaya	-1,78324	103,8709	0,483448	0,483448	12000	No	24 December 2025
22	M. YANI 7	Mingkung Jaya	-1,7825	103,8705	0,390425	0,390425	12000	No	24 December 2025

23	M. YANI 8	Mingkung Jaya	-1,78179	103,871	0,371041	0,371041	12000	No	24 December 2025
24	M. YANI 9	Mingkung Jaya	-1,78249	103,8709	0,385743	0,385743	12000	No	24 December 2025
25	M. YANI 10	Mingkung Jaya	-1,78881	103,8714	0,352095	0,352095	12000	No	24 December 2025
26	Oni F	Mingkung Jaya	-1,79462	103,8665	0,394207	0,394207	12000	No	24 December 2025
27	Asih Sumarni	Mingkung Jaya	-1,76702	103,8627	1,846621	1,846621	30000	No	24 December 2025
28	Bakat	Mingkung Jaya	-1,76875	103,8591	1,8913	1,8913	30000	No	24 December 2025
29	Fransiska Ely Saputra	Mingkung Jaya	-1,78358	103,8541	2,067889	2,067889	30000	No	24 December 2025
30	Hairul Rahman	Mingkung Jaya	-1,78126	103,8517	1,908246	1,908246	30000	No	24 December 2025
31	IMAM MUSTOFA 1	Mingkung Jaya	-1,76717	103,87	1,913938	1,913938	30000	No	24 December 2025
32	Jumat	Mingkung Jaya	-1,77224	103,8646	1,918914	1,918914	30000	No	24 December 2025
33	Khusnul Hamidiyah 2	Mingkung Jaya	-1,76933	103,8495	2,091598	2,091598	30000	No	24 December 2025
34	Narti 2	Mingkung Jaya	-1,77041	103,859	1,93314	1,93314	30000	No	24 December 2025

35	Paimin	Mingkung Jaya	-1,77785	103,8589	2,036146	2,036146	30000	No	24 December 2025
36	Royadi	Mingkung Jaya	-1,79718	103,8624	1,939795	1,939795	30000	No	24 December 2025
37	Simin	Mingkung Jaya	-1,77229	103,8609	1,92852	1,92852	30000	No	24 December 2025
38	Siti Patonah	Mingkung Jaya	-1,77895	103,8519	1,937207	1,937207	30000	No	24 December 2025
39	Sumaryono	Mingkung Jaya	-1,77299	103,8572	1,923481	1,923481	30000	No	24 December 2025
40	Su'udi	Mingkung Jaya	-1,7979	103,8625	1,944582	1,944582	30000	No	24 December 2025
41	Suyanto	Mingkung Jaya	-1,77971	103,8519	1,976527	1,976527	30000	No	24 December 2025
42	Mahyudin Daulai	Mingkung Jaya	-1,76567	103,8496	1,980501	1,980501	30000	No	24 December 2025
43	Zainal Abidin	Mingkung Jaya	-1,76309	103,8517	1,931634	1,931634	30000	No	24 December 2025
44	Ramanda Jaya Saputra	Mingkung Jaya	-1,77393	103,8646	1,9134	1,9134	30000	No	24 December 2025
45	PATAH GUNADI	Mingkung Jaya	-1,76874	103,8609	1,954672	1,954672	30000	No	24 December 2025
46	Lasmi binti Karto Koso	Mingkung Jaya	-1,77238	103,8627	1,95423	1,95423	30000	No	24 December 2025

47	WIDARSIH	Mingkung 5	-1,76791	103,8646	1,892369	1,892369	30000	No	24 December 2025
48	GUNARIAH	Mingkung Jaya	-1,77059	103,8646	1,907177	1,907177	30000	No	24 December 2025
49	Sunarto bin Karto Dikromo	Mingkung Jaya	-1,7714	103,8646	1,880187	1,880187	30000	No	24 December 2025
50	Cici Diana Oktaviani	Mingkung Jaya	-1,77049	103,8609	1,900775	1,900775	30000	No	24 December 2025
51	Septian Masbuhin Salis	Mingkung Jaya	-1,77414	103,8626	1,967012	1,967012	30000	No	24 December 2025
52	Misri 1	Mingkung Jaya	-1,77342	103,8664	1,952844	1,952844	30000	No	24 December 2025
53	Sarwen	Mingkung Jaya	-1,7807	103,8555	1,985437	1,985437	30000	No	24 December 2025
54	Imelda Mita Rismaniar	Mingkung Jaya	-1,77828	103,8572	1,995975	1,995975	30000	No	24 December 2025
55	PROBO PANTI NURAINI	Mingkung Jaya	-1,78237	103,8557	2,042877	2,042877	30000	No	24 December 2025
56	Suyatin	Mingkung Jaya	-1,78469	103,8575	1,934912	1,934912	30000	No	24 December 2025
57	WARSIMAN	Mingkung Jaya	-1,78682	103,8571	1,92253	1,92253	30000	No	24 December 2025
58	Muhammad Jalil	Mingkung Jaya	-1,78531	103,8608	1,955099	1,955099	30000	No	24 December 2025

59	Imam marzuki 2	Mingkung Jaya	-1,76689	103,8737	1,962408	1,962408	30000	No	24 December 2025
60	Sapuan 1	Mingkung Jaya	-1,77843	103,8643	2,038959	2,038959	30000	No	24 December 2025
61	RINA PRIHATI	Mingkung Jaya	-1,78818	103,8627	0,87885	0,87885	30000	No	24 December 2025
62	Abu Kastomo	Mingkung Jaya	-1,79362	103,8592	2,038578	2,038578	30000	No	24 December 2025
63	Mariati	Mingkung Jaya	-1,79553	103,8608	1,928056	1,928056	30000	No	24 December 2025
64	Ahmad Sardi	Mingkung Jaya	-1,79862	103,8624	1,965188	1,965188	30000	No	24 December 2025
65	AMAT LAMIDIN	Mingkung Jaya	-1,77319	103,8537	1,891059	1,891059	30000	No	24 December 2025
66	Tumingan	Mingkung Jaya	-1,77214	103,8572	1,905086	1,905086	30000	No	24 December 2025
67	Tohari	Mingkung Jaya	-1,7643	103,8503	1,848801	1,848801	30000	No	24 December 2025
68	Hermanto 2	Mingkung Jaya	-1,76788	103,861	1,929212	1,929212	30000	No	24 December 2025
69	Asnuri 3	Mingkung Jaya	-1,77674	103,8571	1,927404	1,927404	30000	No	24 December 2025
70	Ngatio	Mingkung Jaya	-1,77577	103,8589	1,917861	1,917861	30000	No	24 December 2025

71	Sunarto bin Cipto Suarno	Mingkung Jaya	-1,77223	103,859	1,935514	1,935514	30000	No	24 December 2025
72	Iwayan astu Dana	Mingkung Jaya	-1,76699	103,8591	1,945961	1,945961	30000	No	24 December 2025
73	Solehah 2	Mingkung Jaya	-1,77487	103,8572	1,850234	1,850234	30000	No	24 December 2025
74	Wagiyono	Mingkung Jaya	-1,77124	103,8572	1,895539	1,895539	30000	No	24 December 2025
75	Fatchurrohman	Mingkung Jaya	-1,79582	103,8679	1,967112	1,967112	30000	No	24 December 2025
76	Samin	Mingkung Jaya	-1,79845	103,868	2,012446	2,012446	30000	No	24 December 2025
77	Rofi Muhamad N	Mingkung Jaya	-1,79934	103,8679	1,98607	1,98607	30000	No	24 December 2025
78	Sartini	Mingkung Jaya	-1,8002	103,868	1,998118	1,998118	30000	No	24 December 2025
79	Abdillah Rifqi Septian	Mingkung Jaya	-1,80109	103,868	2,018453	2,018453	30000	No	24 December 2025
80	Adi Saputra	Mingkung Jaya	-1,80552	103,8662	1,96291	1,96291	30000	No	24 December 2025
81	Jumlah binti Mangun Wiyono	Mingkung Jaya	-1,80439	103,868	1,99404	1,99404	30000	No	24 December 2025
82	Beni Iswantoro	Mingkung Jaya	-1,80274	103,868	1,980638	1,980638	30000	No	24 December 2025

83	Katimun	Mingkung Jaya	-1,80193	103,868	2,043882	2,043882	30000	No	24 December 2025
84	Rohmad	Mingkung Jaya	-1,80357	103,868	2,038805	2,038805	30000	No	24 December 2025
85	SUMADI	Mingkung Jaya	-1,80451	103,8661	1,902855	1,902855	30000	No	24 December 2025
86	Asnuri 1	Mingkung Jaya	-1,80266	103,8661	1,916675	1,916675	30000	No	24 December 2025
87	Suparmi	Mingkung Jaya	-1,80167	103,8661	1,917356	1,917356	30000	No	24 December 2025
88	Nanang Eko Harsantto	Mingkung Jaya	-1,79775	103,8661	1,898489	1,898489	30000	No	24 December 2025
89	Mutniroh	Mingkung Jaya	-1,79681	103,8661	1,955396	1,955396	30000	No	24 December 2025
90	Uswatun Chasanah	Mingkung Jaya	-1,79587	103,8662	1,939735	1,939735	30000	No	24 December 2025
91	Wagimin	Mingkung Jaya	-1,8001	103,8636	2,05026	2,05026	30000	No	24 December 2025
92	Suwono	Mingkung Jaya	-1,8026	103,8644	1,957759	1,957759	30000	No	24 December 2025
93	Sutaji	Mingkung Jaya	-1,79942	103,8624	1,946524	1,946524	30000	No	24 December 2025
94	Suratman bin Muh Rodin	Mingkung Jaya	-1,79465	103,8642	2,099551	2,099551	30000	No	24 December 2025

95	Sumpenak	Mingkung Jaya	-1,7977	103,8644	1,92535	1,92535	30000	No	24 December 2025
96	Maharani Daulay	Mingkung Jaya	-1,79245	103,8627	2,021382	2,021382	30000	No	24 December 2025
97	Nyana	Mingkung Jaya	-1,7933	103,8642	1,863448	1,863448	30000	No	24 December 2025
98	SUPARDI	Mingkung Jaya	-1,79941	103,8608	2,010058	2,010058	30000	No	24 December 2025
99	Suparmin	Mingkung Jaya	-1,8017	103,8645	1,971965	1,971965	30000	No	24 December 2025
100	Tugiarti	Mingkung Jaya	-1,80441	103,8644	2,08743	2,08743	30000	No	24 December 2025
101	Joko Miswono	Mingkung Jaya	-1,7968	103,8644	1,921492	1,921492	30000	No	24 December 2025
102	Mawardi	Mingkung Jaya	-1,80348	103,8644	1,90418	1,90418	30000	No	24 December 2025
103	Karno	Mingkung Jaya	-1,80074	103,8644	2,078538	2,078538	30000	No	24 December 2025
104	Kandar	Mingkung Jaya	-1,80533	103,8645	1,922017	1,922017	30000	No	24 December 2025
105	Sukamdi	Mingkung Jaya	-1,79788	103,8607	2,016439	2,016439	30000	No	24 December 2025
106	Kadiman	Mingkung Jaya	-1,80621	103,8645	1,998329	1,998329	30000	No	24 December 2025

107	Ikhwan Febriandi	Mingkung Jaya	-1,79336	103,8613	2,242879	2,242879	30000	No	24 December 2025
108	Hendri Kurniawan	Mingkung Jaya	-1,7952	103,8626	1,985494	1,985494	30000	No	24 December 2025
109	Hariyanto	Mingkung Jaya	-1,79331	103,8603	1,967592	1,967592	30000	No	24 December 2025
110	Ketut Tama	Mingkung Jaya	-1,79209	103,8608	1,836172	1,836172	30000	No	24 December 2025
111	Suharno 2	Mingkung Jaya	-1,79334	103,8627	2,01924	2,01924	30000	No	24 December 2025
112	M YANI 2	Mingkung Jaya	-1,79426	103,8627	1,985112	1,985112	30000	No	24 December 2025
113	Sujarto 1	Mingkung Jaya	-1,79667	103,8614	1,992186	1,992186	30000	No	24 December 2025
114	Bakat	Mingkung Jaya	-1,79584	103,8644	1,897554	1,897554	30000	No	24 December 2025
115	KADIYEM	Mingkung Jaya	-1,78109	103,8627	2,001107	2,001107	30000	No	24 December 2025
116	SANTI WULANSARI	Mingkung Jaya	-1,78014	103,8627	2,003115	2,003115	30000	No	24 December 2025
117	KAYATI	Mingkung Jaya	-1,77922	103,8627	2,015716	2,015716	30000	No	24 December 2025
118	SUTIONO	Mingkung Jaya	-1,77828	103,8628	2,033531	2,033531	30000	No	24 December 2025

119	TRIMANTO	Mingkung Jaya	-1,77968	103,8644	1,985123	1,985123	30000	No	24 December 2025
120	KARMIDIK	Mingkung Jaya	-1,78086	103,8643	1,964429	1,964429	30000	No	24 December 2025
121	MURIDAN	Mingkung Jaya	-1,78212	103,8643	1,991463	1,991463	30000	No	24 December 2025
122	Wawan Hermanto	Mingkung Jaya	-1,78335	103,8643	1,963848	1,963848	30000	No	24 December 2025
123	Jaman Sinulingga	Mingkung Jaya	-1,78573	103,8643	1,974945	1,974945	30000	No	24 December 2025
124	SUDIN	Mingkung Jaya	-1,78701	103,8642	1,935089	1,935089	30000	No	24 December 2025
125	Bejo	Mingkung Jaya	-1,78934	103,8643	1,9924	1,9924	30000	No	24 December 2025
126	TAMSUDI	Mingkung Jaya	-1,79193	103,8642	1,860902	1,860902	30000	No	24 December 2025
127	SUWANDI	Mingkung Jaya	-1,79157	103,8627	1,957141	1,957141	30000	No	24 December 2025
128	M TULUS MARGIAnto	Mingkung Jaya	-1,79065	103,8627	2,167541	2,167541	30000	No	24 December 2025
129	WINARNI	Mingkung Jaya	-1,78973	103,8626	2,131008	2,131008	30000	No	24 December 2025
130	NURHAYATI	Mingkung Jaya	-1,78882	103,8626	2,115027	2,115027	30000	No	24 December 2025

131	SUMINTEN	Mingkung Jaya	-1,78625	103,8626	2,080408	2,080408	30000	No	24 December 2025
132	ABDUR ROZAK	Mingkung Jaya	-1,78467	103,8627	2,018243	2,018243	30000	No	24 December 2025
133	SAWINAH	Mingkung Jaya	-1,78194	103,8627	1,984948	1,984948	30000	No	24 December 2025
134	SUMINO HADI	Mingkung Jaya	-1,78283	103,8627	1,985735	1,985735	30000	No	24 December 2025
135	SUKATMI 2	Mingkung Jaya	-1,78369	103,8625	2,075276	2,075276	30000	No	24 December 2025
136	KARTIMAH	Mingkung Jaya	-1,78775	103,8627	1,02316	1,02316	30000	No	24 December 2025
137	Panani	Mingkung Jaya	-1,78307	103,8589	1,902026	1,902026	30000	No	24 December 2025
138	Abu Choiri	Mingkung Jaya	-1,77981	103,8589	1,916156	1,916156	30000	No	24 December 2025
139	Jumasri	Mingkung Jaya	-1,77883	103,859	1,918358	1,918358	30000	No	24 December 2025
140	Jamsuri	Mingkung Jaya	-1,78402	103,8589	1,895018	1,895018	30000	No	24 December 2025
141	Lamidi	Mingkung Jaya	-1,78497	103,8588	2,023492	2,023492	30000	No	24 December 2025
142	Ahmad Kowim	Mingkung Jaya	-1,78594	103,8589	2,004949	2,004949	30000	No	24 December 2025

143	Sarjimin	Mingkung Jaya	-1,78689	103,8589	1,992883	1,992883	30000	No	24 December 2025
144	Kasminto	Mingkung Jaya	-1,78699	103,8607	1,967716	1,967716	30000	No	24 December 2025
145	Sapri	Mingkung Jaya	-1,78782	103,8608	1,898182	1,898182	30000	No	24 December 2025
146	Nurohman	Mingkung Jaya	-1,79129	103,8588	2,0499	2,0499	30000	No	24 December 2025
147	Tulus	Mingkung Jaya	-1,78883	103,8588	2,066875	2,066875	30000	No	24 December 2025
148	Wagiyem	Mingkung Jaya	-1,78615	103,8608	1,949953	1,949953	30000	No	24 December 2025
149	Pungut Juprianto	Mingkung Jaya	-1,77937	103,8609	2,045884	2,045884	30000	No	24 December 2025
150	Gunen Saputra	Mingkung Jaya	-1,78785	103,8588	2,012311	2,012311	30000	No	24 December 2025
151	Sugeng Purwanto	Mingkung Jaya	-1,78978	103,8588	1,913788	1,913788	30000	No	24 December 2025
152	Umar Dani	Mingkung Jaya	-1,78941	103,8607	1,910311	1,910311	30000	No	24 December 2025
153	Melinda Puspita Sari	Mingkung Jaya	-1,79028	103,8607	2,039563	2,039563	30000	No	24 December 2025
154	Mahmudi	Mingkung Jaya	-1,79115	103,8608	2,086531	2,086531	30000	No	24 December 2025

155	Suparjono	Mingkung Jaya	-1,78022	103,8608	2,052585	2,052585	30000	No	24 December 2025
156	Sutrisno bin Suwoto	Mingkung Jaya	-1,7819	103,8608	2,138464	2,138464	30000	No	24 December 2025
157	M. Libasul Ulum	Mingkung Jaya	-1,78365	103,8607	1,911496	1,911496	30000	No	24 December 2025
158	Parman	Mingkung Jaya	-1,7845	103,8608	1,935704	1,935704	30000	No	24 December 2025
159	Sutiyem	Mingkung Jaya	-1,78279	103,8608	2,054737	2,054737	30000	No	24 December 2025
160	Misnanto	Mingkung Jaya	-1,77662	103,8752	2,289853	2,289853	30000	No	24 December 2025
161	Zam Zam	Mingkung Jaya	-1,77621	103,8737	1,994746	1,994746	30000	No	24 December 2025
162	Umi Musafaah	Mingkung Jaya	-1,77529	103,8737	1,986735	1,986735	30000	No	24 December 2025
163	Salamun 2	Mingkung Jaya	-1,76509	103,8737	1,972657	1,972657	30000	No	24 December 2025
164	Hatmini	Mingkung Jaya	-1,76555	103,8751	1,928267	1,928267	30000	No	24 December 2025
165	Suratman bin Gondo S.	Mingkung Jaya	-1,7642	103,8737	1,958563	1,958563	30000	No	24 December 2025
166	Ahmadi	Mingkung Jaya	-1,76671	103,8759	1,889968	1,889968	30000	No	24 December 2025

167	GUMILAH	Mingkung Jaya	-1,76785	103,8737	2,008529	2,008529	30000	No	24 December 2025
168	Maryono	Mingkung Jaya	-1,76935	103,8737	1,99235	1,99235	30000	No	24 December 2025
169	Marjoni	Mingkung Jaya	-1,77023	103,8737	1,960222	1,960222	30000	No	24 December 2025
170	Sugiarto	Mingkung Jaya	-1,77202	103,8737	1,999081	1,999081	30000	No	24 December 2025
171	Khusnul Hamidiyah 1	Mingkung Jaya	-1,77112	103,8737	1,962372	1,962372	30000	No	24 December 2025
172	Ratna Purwasih	Mingkung Jaya	-1,76329	103,8737	1,945497	1,945497	30000	No	24 December 2025
173	Lasiyem	Mingkung Jaya	-1,76208	103,8752	2,064237	2,064237	30000	No	24 December 2025
174	Agus Dwianto	Mingkung Jaya	-1,76372	103,8751	1,923146	1,923146	30000	No	24 December 2025
175	Misri 2	Mingkung Jaya	-1,76737	103,8758	1,99787	1,99787	30000	No	24 December 2025
176	Paimin	Mingkung Jaya	-1,77003	103,8757	2,02481	2,02481	30000	No	24 December 2025
177	Nur Sodik	Mingkung Jaya	-1,77165	103,8756	1,973544	1,973544	30000	No	24 December 2025
178	Walimin	Mingkung Jaya	-1,77316	103,8755	1,929002	1,929002	30000	No	24 December 2025

179	Rahmad Budiman 1	Mingkung Jaya	-1,77412	103,8754	1,936351	1,936351	30000	No	24 December 2025
180	Turut	Mingkung Jaya	-1,77523	103,8753	2,150258	2,150258	30000	No	24 December 2025
181	Surasmin	Mingkung Jaya	-1,77365	103,8736	1,989541	1,989541	30000	No	24 December 2025
182	Rodiatul Yulianah	Mingkung Jaya	-1,76962	103,8609	1,917645	1,917645	30000	No	24 December 2025
183	Supardi bin Saparin	Mingkung Jaya	-1,77322	103,8609	1,920497	1,920497	30000	No	24 December 2025
184	SUMARI	Mingkung Jaya	-1,77685	103,8646	1,940316	1,940316	30000	No	24 December 2025
185	Samud	Mingkung Jaya	-1,77562	103,8646	1,87777	1,87777	30000	No	24 December 2025
186	SITI MURSIYAH	Mingkung Jaya	-1,77326	103,8627	1,950579	1,950579	30000	No	24 December 2025
187	Latif Syarifudin	Mingkung Jaya	-1,77502	103,8627	1,993983	1,993983	30000	No	24 December 2025
188	Wakinu	Mingkung Jaya	-1,77149	103,8627	1,91802	1,91802	30000	No	24 December 2025
189	Mariyawan	Mingkung Jaya	-1,76975	103,8646	1,902322	1,902322	30000	No	24 December 2025
190	SUWITO	Mingkung Jaya	-1,76876	103,8646	1,901693	1,901693	30000	No	24 December 2025

191	Ahmad Taslim	Mingkung Jaya	-1,76791	103,8628	1,88061	1,88061	30000	No	24 December 2025
192	JOKO SUTARNO	Mingkung Jaya	-1,76881	103,8628	1,918817	1,918817	30000	No	24 December 2025
193	Siswanto	Mingkung Jaya	-1,77063	103,8627	1,927165	1,927165	30000	No	24 December 2025
194	Eka Setiorini	Mingkung Jaya	-1,76973	103,8628	1,90146	1,90146	30000	No	24 December 2025
195	Misri 3	Mingkung Jaya	-1,77307	103,8646	1,870701	1,870701	30000	No	24 December 2025
196	SOKIP	Mingkung Jaya	-1,77476	103,8646	1,865018	1,865018	30000	No	24 December 2025
197	M. Yani 1	Mingkung Jaya	-1,78079	103,8538	1,915825	1,915825	30000	No	24 December 2025
198	Suyitno	Mingkung Jaya	-1,77817	103,8519	1,909073	1,909073	30000	No	24 December 2025
199	Sunardi	Mingkung Jaya	-1,77659	103,8519	1,901982	1,901982	30000	No	24 December 2025
200	Suharyani	Mingkung Jaya	-1,78194	103,8518	1,937241	1,937241	30000	No	24 December 2025
201	MUKAYAT	Mingkung Jaya	-1,7832	103,8527	1,904818	1,904818	30000	No	24 December 2025
202	Samijan	Mingkung Jaya	-1,78052	103,8519	2,036315	2,036315	30000	No	24 December 2025

203	Ngainun	Mingkung Jaya	-1,78257	103,8539	1,935321	1,935321	30000	No	24 December 2025
204	Maryuni	Mingkung Jaya	-1,77779	103,8538	1,907335	1,907335	30000	No	24 December 2025
205	Imam Mustofa 2	Mingkung Jaya	-1,78316	103,8509	1,938224	1,938224	30000	No	24 December 2025
206	KARTINAH	Mingkung Jaya	-1,77581	103,8517	1,898491	1,898491	30000	No	24 December 2025
207	Hermanto 1	Mingkung Jaya	-1,7751	103,8516	1,811139	1,811139	30000	No	24 December 2025
208	Eko Susilo	Mingkung Jaya	-1,77875	103,8538	1,912863	1,912863	30000	No	24 December 2025
209	BInti Muzaiyanah	Mingkung Jaya	-1,7774	103,8519	1,816249	1,816249	30000	No	24 December 2025
210	Bibit	Mingkung Jaya	-1,78318	103,8518	1,914839	1,914839	30000	No	24 December 2025
211	Sri Sa'adah	Mingkung Jaya	-1,77444	103,8515	1,873876	1,873876	30000	No	24 December 2025
212	WATIK UTARI	Mingkung Jaya	-1,76337	103,8719	1,920573	1,920573	30000	No	24 December 2025
213	Supriyanto bin mulyono	Mingkung Jaya	-1,76164	103,8719	1,816728	1,816728	30000	No	24 December 2025
214	Suparno bin Madirin	Mingkung Jaya	-1,77975	103,8538	2,015775	2,015775	30000	No	24 December 2025

215	Mathius Rudianto	Mingkung Jaya	-1,7681	103,87	1,916006	1,916006	30000	No	24 December 2025
216	Sukamin	Mingkung Jaya	-1,77205	103,8718	1,984374	1,984374	30000	No	24 December 2025
217	Solehah 1	Mingkung Jaya	-1,76252	103,8719	1,917747	1,917747	30000	No	24 December 2025
218	Lasiyah binti Solehan	Mingkung Jaya	-1,77076	103,87	1,931378	1,931378	30000	No	24 December 2025
219	SITI JUMAROH	Mingkung Jaya	-1,77686	103,8715	1,910757	1,910757	30000	No	24 December 2025
220	SITI AMINAH 1	Mingkung Jaya	-1,76423	103,8719	1,925134	1,925134	30000	No	24 December 2025
221	Saeun	Mingkung Jaya	-1,77611	103,8701	1,919707	1,919707	30000	No	24 December 2025
222	Nursidin	Mingkung Jaya	-1,76603	103,8719	1,987529	1,987529	30000	No	24 December 2025
223	Jumlah binti Siran	Mingkung Jaya	-1,77168	103,87	1,921324	1,921324	30000	No	24 December 2025
224	Lasiyah binti Niso	Mingkung Jaya	-1,77033	103,8718	1,990651	1,990651	30000	No	24 December 2025
225	Slamet Riadi	Mingkung Jaya	-1,77429	103,87	1,917624	1,917624	30000	No	24 December 2025
226	Ahmad Subki 1	Mingkung Jaya	-1,76899	103,87	1,917786	1,917786	30000	No	24 December 2025

227	MOH. GUFRON	Mingkung Jaya	-1,77706	103,8734	2,335528	2,335528	30000	No	24 December 2025
228	FAUZI	Mingkung Jaya	-1,77336	103,8683	1,925194	1,925194	30000	No	24 December 2025
229	Sukatmi 1	Mingkung Jaya	-1,77513	103,8684	1,939042	1,939042	30000	No	24 December 2025
230	Slamet Riyadi	Mingkung Jaya	-1,76983	103,8683	1,925303	1,925303	30000	No	24 December 2025
231	Sarno	Mingkung Jaya	-1,77246	103,8683	1,893187	1,893187	30000	No	24 December 2025
232	Salamun 1	Mingkung Jaya	-1,76707	103,8664	1,939984	1,939984	30000	No	24 December 2025
233	Narti 1	Mingkung Jaya	-1,77426	103,8683	1,932759	1,932759	30000	No	24 December 2025
234	Mukhlisin	Mingkung Jaya	-1,76889	103,8664	1,869926	1,869926	30000	No	24 December 2025
235	Misiyah	Mingkung Jaya	-1,76894	103,8682	1,899265	1,899265	30000	No	24 December 2025
236	ISMIATUN	Mingkung Jaya	-1,7769	103,8666	1,987819	1,987819	30000	No	24 December 2025
237	Kusyanto	Mingkung Jaya	-1,7751	103,8664	1,972641	1,972641	30000	No	24 December 2025
238	Khoirul Anam	Mingkung Jaya	-1,768	103,8664	1,900705	1,900705	30000	No	24 December 2025

239	KASIHARDI	Mingkung Jaya	-1,76979	103,8664	1,970328	1,970328	30000	No	24 December 2025
240	Poniyem	Mingkung Jaya	-1,76806	103,8682	1,913922	1,913922	30000	No	24 December 2025
241	Sutrisno bin Sarno	Mingkung Jaya	-1,77158	103,8683	1,890854	1,890854	30000	No	24 December 2025
242	Jumar	Mingkung Jaya	-1,76715	103,8682	1,964555	1,964555	30000	No	24 December 2025
243	Suharno 1	Mingkung Jaya	-1,77161	103,8664	1,955215	1,955215	30000	No	24 December 2025
244	MUKAROM	Mingkung Jaya	-1,77601	103,8665	1,977364	1,977364	30000	No	24 December 2025
245	Guntoro	Mingkung Jaya	-1,77688	103,8683	1,90103	1,90103	30000	No	24 December 2025
246	DARNAIDA M	Mingkung Jaya	-1,776	103,8684	1,922768	1,922768	30000	No	24 December 2025
247	Boraidah	Mingkung Jaya	-1,77071	103,8683	1,893026	1,893026	30000	No	24 December 2025
248	Bagus Trifahri	Mingkung Jaya	-1,77252	103,8664	1,946389	1,946389	30000	No	24 December 2025
249	ABDUL. KARIM bin P. Rasyid	Mingkung Jaya	-1,77069	103,8665	1,955736	1,955736	30000	No	24 December 2025
250	Saiful kuat	Mingkung Jaya	-1,79981	103,8699	1,86718	1,86718	30000	No	24 December 2025

251	Khasbullah	Mingkung Jaya	-1,79663	103,8698	1,92617	1,92617	30000	No	24 December 2025
252	Binah	Mingkung Jaya	-1,76865	103,8573	1,905373	1,905373	30000	No	24 December 2025
253	Tohari	Mingkung Jaya	-1,76695	103,8573	1,926233	1,926233	30000	No	24 December 2025
254	SELVI INAYAH	Mingkung Jaya	-1,76397	103,8537	1,904676	1,904676	30000	No	24 December 2025
255	Saryono	Mingkung Jaya	-1,76868	103,8554	1,911587	1,911587	30000	No	24 December 2025
256	Erna Septiana	Mingkung Jaya	-1,76686	103,8537	1,916255	1,916255	30000	No	24 December 2025
257	Ramidjo	Mingkung Jaya	-1,76778	103,8554	1,926482	1,926482	30000	No	24 December 2025
258	Nurbaiti	Mingkung Jaya	-1,76779	103,8573	1,921314	1,921314	30000	No	24 December 2025
259	Siti Esmiyah	Mingkung Jaya	-1,7635	103,8555	1,977013	1,977013	30000	No	24 December 2025
260	Makhrus	Mingkung Jaya	-1,7696	103,8554	1,939326	1,939326	30000	No	24 December 2025
261	Kusnan	Mingkung Jaya	-1,76427	103,8545	1,889318	1,889318	30000	No	24 December 2025
262	Banimin	Mingkung Jaya	-1,76598	103,8537	1,952214	1,952214	30000	No	24 December 2025

263	Purwanto	Mingkung Jaya	-1,7678	103,8537	1,953521	1,953521	30000	No	24 December 2025
264	Siti Aminah 2	Mingkung Jaya	-1,77244	103,8517	2,174886	2,174886	30000	No	24 December 2025
265	Riko Aris Kristiyanto	Mingkung Jaya	-1,77161	103,8517	1,9377	1,9377	30000	No	24 December 2025
266	Taruno	Mingkung Jaya	-1,77085	103,8495	1,9559	1,9559	30000	No	24 December 2025
267	Rahmat budiman 2	Mingkung Jaya	-1,77134	103,8537	1,919076	1,919076	30000	No	24 December 2025
268	NGABIDAH	Mingkung Jaya	-1,77015	103,8517	1,904583	1,904583	30000	No	24 December 2025
269	Aris Widiyanti	Mingkung Jaya	-1,77411	103,8537	1,928613	1,928613	30000	No	24 December 2025
270	Ahmad Subkhi 2	Mingkung Jaya	-1,77041	103,8538	1,936559	1,936559	30000	No	24 December 2025
271	Tarwiyah	Mingkung Jaya	-1,76787	103,8517	1,956452	1,956452	30000	No	24 December 2025
272	Widodo Budi Dharma	Mingkung Jaya	-1,76377	103,8496	1,90126	1,90126	30000	No	24 December 2025
273	SUHARSO	Mingkung Jaya	-1,76304	103,8496	1,941558	1,941558	30000	No	24 December 2025
274	Sapuan 2	Mingkung Jaya	-1,76114	103,8517	1,892302	1,892302	30000	No	24 December 2025

275	PARYANTO	Mingkung Jaya	-1,77161	103,8495	2,246834	2,246834	30000	No	24 December 2025
276	Haizah Munawaroh	Mingkung Jaya	-1,77244	103,8497	2,147657	2,147657	30000	No	24 December 2025
277	Suparno bin Parto Dirjo langkir	Mingkung Jaya	-1,76771	103,8719	1,982717	1,982717	30000	No	24 December 2025
278	Suparno	Mingkung Jaya	-1,77055	103,8554	1,949094	1,949094	30000	No	24 December 2025
279	Imam marzuki 1	Mingkung Jaya	-1,766	103,8737	1,9904	1,9904	30000	No	24 December 2025
280	M. YANI 3	Mingkung Jaya	-1,77676	103,8554	1,887007	1,887007	30000	No	24 December 2025
281	EL SODRI	Mingkung Jaya	-1,78418	103,8552	2,06345	2,06345	30000	No	24 December 2025
282	Aziz Ilham Nurdin	Mingkung Jaya	-1,79231	103,8589	2,024008	2,024008	30000	No	24 December 2025
Total					509,8983	509,8983	7,992,000		

Note : *) Period of Jan – Dec 2025

PT TUV Rheinland Indonesia is member of TÜV Rheinland Group, a global leader in independent testing and assessment services. Established in 1872, TÜV Rheinland Group has over 130 years of experience in providing various types of certifications as well as technical services for over 360 locations in 62 countries worldwide.

The audit team for the audit consists of the following :

Audit Team	Role/ Area of Requirement	Qualification and Experience
Efrida	Audit Team Leader –Social, Legal, SCCS	<ul style="list-style-type: none"> • She has following some trainings such as i.e, RSPO P&C Lead Auditors Training Course (2018), ISPO Auditor Training (2016), IRCA ISO 9001 training (2018), Refreshment ISO 19011:2011 Training (2021), Refreshment ISO 19011:2011 Training(2024), Refreshment ISO 19011:2018 (2020), RSPO SCCS Training (2022), RISS training (2022) • She has work experience such as i.e, Senior Field Conductor, Wilmar International Plantation (2010-2012), Auditor RSPO, ISPO at TUV Rheinland Indonesia (2016 – now)
Muhammad Rinaldi	Auditor – Best Agricultural Practices, Environment, GHG, OHS	<ul style="list-style-type: none"> • He has following some trainings such as i.e, Lead Auditor/Auditor ISPO training (2021); ISO 9001 Training (2014);Health & Safety Officer (AK3U) Training (2014); Auditor of Health & Safety System Management (SMK3) Training; • CORSIA Verification Training (2020); ISCC Waste & Residue Training (2020); ISO 14060 series version 2020 Training (2021); • RSPO P&C Lead Auditors Training Course Refreshmen (2021); RSPO RISS 2022; SCCS RSPO Training (2018); Worker Welfare Workshop (2018); ISCC EU & Plus Basic Training (2019); ISCC GHG Training (2022); • Awareness of Life Cycle Analysis (2022); •ISCC ARIA Training (2023); • Training of procedures for implementing the carbon economic value of the Electric Power generation subsector (Permen ESDM No 16 Tahun 2022) (2024), RISS training (2022) • He has work experience such as i.e, PT. Sinar Mas Agro Resources and Technology (PT. SMART Tbk) (2009-2013); • Lead Auditor/Auditor for Scheme of RSPO, ISPO, ISCC & Carbon Scheme (2014-now); ISCC GHG Expert: April 2022 – Now; Supervisor of Green Economy Division (Carbon Scheme & Biofuel/Biomass Standard) February 2019 – Now
Wahyu	Auditor – OHS and Legal	<ul style="list-style-type: none"> • He has following some trainings such as i.e, RSPO- endorsed lead Auditor Course (2015), RSPO Supply Chain Certification Refresher Course(2018), RSPO Supply Chain Certification Refresher Course (2006), Refreshment ISO 19011:2011 training (2016), IRCA ISO 9001 Auditor Training (2009), . IRCA ISO 14001 Auditor training (2011), ISPO Auditor Training (2012), RSPO Lead Auditor Training, a refresher course for RSPO endorsed P&C; 23 August 2019, RISS Training (2022) • He has work experience such as i.e, QHSE COORDINATOR at PT Carsurin (2006 – 2009), Manajer Teknis at PT Mutu Hijau Indonesia (2010 – 2014), Freelance auditor, trainer and consultant (2014- sekarang)

CB PT TUV Rheinland Indonesia invites stakeholders to provide comments (if any) on any following matters related to the site for Audit. Comments are only accepted within 30 days from the date of this letter and will be considered in the audit.

Comments that are requested to be treated confidential or to remain anonymous, please insert "CONFIDENTIAL" in the subject of your reply.

Commenters will need to include the details below in case we need to contact you for further clarification on any issues that were raised.

Name : Efrida
Position : Lead Auditor
Email : efrida@tuv.com
Phone Number : 021 – 579 44 579

Comments must be submitted to :

Certification Body :
PT TUV Rheinland Indonesia
Efrida
Lead Auditor
Menara Karya 10th Floor
Jl. H.R. Rasuna Said Block X-5 Kav 1-2
Jakarta 12950
Tel: +62 21 – 579 44 579
Fax: +62 21 – 579 44 575
Email : efrida@tuv.com
Website: www.tuv.com

Auditee :
Koperasi Mitra Inti Sumber Makmur
Umi Rofika Duri
Secretary Groups
Desa Mingkung Jaya, Sungai Gelom, Muaro
Jambi, Provinsi Jambi
Tel: 08217932609
Fax:
Email : icskudmitraintismmingkungjaya@gmail.com

Yours faithfully,



Dian S Soeminta
Director
PT TUV Rheinland Indonesia