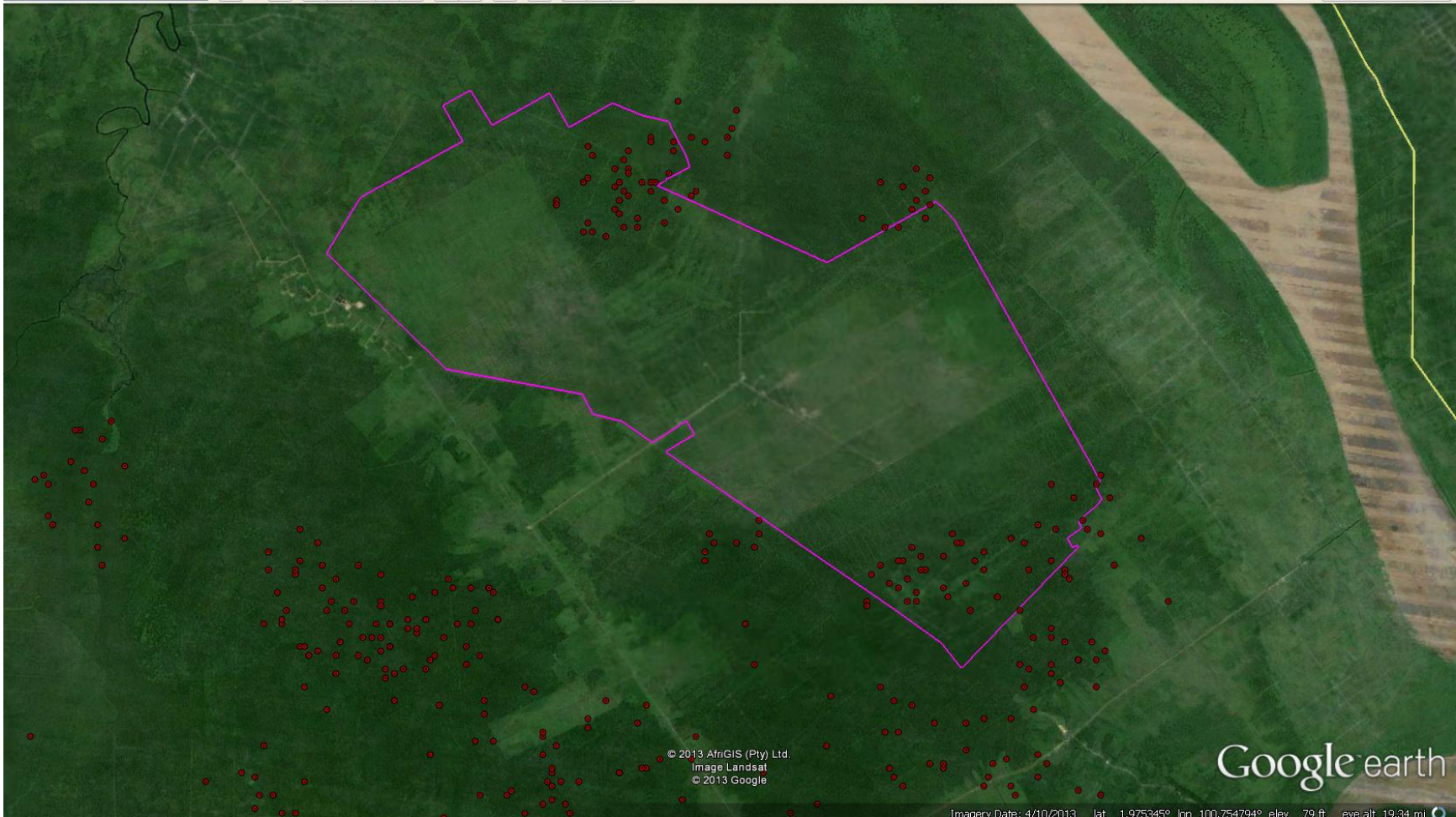


PT. JATIM JAYA PERKASA

74 hotspots were detected in PT. Jatim Jaya Perkasa.



No	LATITUDE	LONGITUDE	DATE	TIME	SATELLITE	No	LATITUDE	LONGITUDE	DATE	TIME	SATELLITE
1	1.994	100.793	6/1/2013	0345	T	41	2.009	100.737	6/21/2013	1835	A
2	1.923	100.812	6/8/2013	0350	T	42	2.012	100.732	6/21/2013	1835	A
3	2.000	100.726	6/8/2013	0350	T	43	2.002	100.730	6/21/2013	1835	A
4	2.009	100.727	6/8/2013	0350	T	44	1.992	100.729	6/21/2013	1835	A
5	2.010	100.718	6/8/2013	0350	T	45	1.926	100.818	6/21/2013	1835	A
6	1.907	100.814	6/19/2013	0630	A	46	1.919	100.792	6/21/2013	1835	A
7	1.932	100.826	6/19/2013	0630	A	47	1.918	100.804	6/21/2013	1835	A
8	1.918	100.821	6/19/2013	0630	A	48	1.916	100.816	6/21/2013	1835	A
9	1.916	100.806	6/19/2013	0630	A	49	1.909	100.791	6/21/2013	1835	A
10	1.913	100.802	6/19/2013	1555	T	50	1.907	100.803	6/21/2013	1835	A
11	1.911	100.791	6/19/2013	1555	T	51	2.000	100.732	6/22/2013	0400	T
12	1.925	100.822	6/19/2013	1555	T	52	1.998	100.725	6/22/2013	0400	T
13	1.922	100.801	6/19/2013	1555	T	53	1.996	100.738	6/22/2013	0400	T
14	1.921	100.790	6/19/2013	1555	T	54	1.912	100.787	6/22/2013	0700	A
15	1.935	100.821	6/19/2013	1555	T	55	1.995	100.725	6/22/2013	0700	A
16	1.994	100.729	6/19/2013	1555	T	56	2.005	100.724	6/22/2013	0700	A
17	2.004	100.727	6/19/2013	1555	T	57	1.918	100.787	6/23/2013	1530	T
18	2.002	100.717	6/19/2013	1555	T	58	1.916	100.793	6/23/2013	1530	T
19	2.005	100.727	6/19/2013	1850	A	59	1.915	100.781	6/23/2013	1530	T
20	2.004	100.736	6/19/2013	1850	A	60	1.990	100.722	6/23/2013	1530	T
21	1.922	100.800	6/19/2013	1850	A	61	2.002	100.732	6/23/2013	1530	T
22	1.914	100.789	6/19/2013	1850	A	62	1.999	100.727	6/23/2013	1530	T
23	2.003	100.718	6/20/2013	0415	T	63	2.011	100.737	6/23/2013	1530	T
24	1.992	100.787	6/20/2013	0415	T	64	1.924	100.799	6/23/2013	1825	A
25	2.008	100.719	6/20/2013	0710	A	65	1.998	100.735	6/24/2013	0350	T
26	1.910	100.798	6/21/2013	1540	T	66	1.917	100.783	6/24/2013	0350	T
27	1.909	100.789	6/21/2013	1540	T	67	1.916	100.792	6/24/2013	0350	T
28	1.922	100.815	6/21/2013	1540	T	68	2.002	100.725	6/24/2013	1615	T
29	1.920	100.806	6/21/2013	1540	T	69	2.007	100.726	6/24/2013	1910	A
30	1.919	100.797	6/21/2013	1540	T	70	1.998	100.711	6/24/2013	1910	A
31	1.918	100.788	6/21/2013	1540	T	71	1.996	100.724	6/24/2013	1910	A
32	1.993	100.735	6/21/2013	1540	T	72	1.993	100.718	6/24/2013	1910	A
33	1.992	100.726	6/21/2013	1540	T	73	1.997	100.711	6/25/2013	1520	T
34	1.991	100.717	6/21/2013	1540	T	74	1.991	100.719	6/26/2013	0340	T
35	2.002	100.733	6/21/2013	1540	T						
36	2.001	100.724	6/21/2013	1540	T						
37	2.011	100.732	6/21/2013	1540	T						
38	1.913	100.785	6/21/2013	1840	A						
39	1.912	100.797	6/21/2013	1840	A						
40	1.910	100.809	6/21/2013	1840	A						