

# **Summary Report of Planning and Management of PT Surya Agro Palma, Sanggau Regency and West Kalimantan Province, Indonesia**

## **1. Executive Summary**

PT Surya Agro Palma (PT SAP) is a company operating oil palm plantations in the area of West Kalimantan Province. In operating oil palm plantations, the company is committed to adhering to all applicable government policies, including in the areas of production, environment and social economy. Further, the company is committed to maintain a harmonious relationship with the local communities and contribute to their economic livelihood through the development of plasma schemes, among other initiatives.

PT SAP plans to develop 17,500 ha of land for oil palm planting. The concession area is situated in 4 villages in Toba District, Sanggau Regency, West Kalimantan Province; and can be reached from the capital of Pontianak through land transportation over a distance of 140 km. As part of sustainable palm oil management, PT SAP seeks to comply with RSPO's New Planting Procedures which was enforced on 1<sup>st</sup> January 2010.

The location permit (Izin Lokasi) for PT SAP was approved by Regent Decree of Sanggau No: 395/PEM/2009 dated 20<sup>th</sup> November 2009 with an extension of No. 508 dated 12<sup>th</sup> November 2012. The Plantation Operational License (Izin Usaha Perkebunan/IUP) was approved by Regent of Sanggau, No.277 dated 7<sup>th</sup> July 2010.

PT SAP commissioned the preparation of AMDAL in 2006 and received government approval No. 108/BLHD/2006. The AMDAL was prepared by an accredited AMDAL consultant and included consideration of both negative as well as positive social and environmental impacts. The scope of the AMDAL included assessment of impacts associated with land development, infrastructure, road access, mill operations and transportation. The AMDAL included assessment of the suitability of soils, topography and drainage and analysis of the land cover vegetation. The AMDAL assessed the impacts on natural ecosystems and water resources.

As HCVs were not covered by the AMDAL assessment, PT SAP proceeded to conduct a separate HCV assessment in July 2010 by an appropriately qualified, experienced and RSPO approved assessor team comprising of Ecologists and Social experts from Aksenta. The HCV assessment collected additional information from local communities on environmental and social aspects related to their use of resources of the new development site.

The AMDAL preparation process involved a social survey at the communities likely to be directly affected by the project. The survey involved the interview of local people to collect information on the background of the respondents and also to seek the respondents' views and suggestions on the project. The AMDAL included assessment of current land resources use, land ownership and user rights and potential social impacts.

PT SAP has commenced a program to socialize information to the local communities on the project and to receive feedback. This started with a meeting in June 2007 between the Government, the representatives of local villages and PT SAP, prior to the land development.

Subsequently, PT SAP staff have held follow-up public meetings at each of the villages with the relevant information on meeting attendees, topics discussed and issues raised having been recorded and documented. PT SAP used information from the AMDAL, the HCV assessment and information from stakeholder meetings to prepare a list of social and environmental aspects and impacts.

PT SAP's AMDAL consultant prepared an RKL/RPL that was approved by the Government in 2005. The RKL/RPL is considered appropriate for the project. PT Surya Agro Palma has documented SOPs for implementing the new development that draw upon the collective experience of Genting Group of oil palm companies in Indonesia.

The results of the HCV assessment have shown that soil types throughout the area are *Tropudults*, *Paleodults*, *Trupohumults*, *Dystropepts*, *Inplorthox* and *Tropofibris*.

All six HCVs defined in the Toolkit were evaluated. Potential HCV areas were identified and mapped resulting in a total HCV area of 1,995 ha (with overlaps among different sub-values).

**Table 1: HCV areas PT Surya Agro Palma**

HCV Component	HCV Exist? Y/N	HCV Area	Area (Ha)
<b>HCV 1. Areas with Important Levels of Biodiversity</b>			
1.1. Areas that Contain or Provide biodiversity Support Function to Protection or Conservation Areas	Y	Hutan keramat Nek Ucing; Buffer hutan lindung	50.9
1.2. Critically Endangered Species	Y	Sempadan S. Dawak, sarang tua buaya jolong, pekong keramat buaya Sekait; Sempadan S. Pelunjung; Sempadan S. Bawang Kecil; Hutan keramat Nek Ucing	251.4
1.3. Areas that Contain Habitat for Viable Populations of Endangered, Restricted Range or Protected Species	Y	Sempadan S. Sayu, hutan rawa S. Sayu; S. Abor; S. Nek Kambing dan Nek Lambun; S. Dawak, sarang tua buaya jolong, pekong keramat buaya Sekait; S. Pangal; Hutan adat Embangai Hilir; Hutan Sekunder Lereng Belungai, Nek Dolong, Bukit Sayu; Bukit Bungkang; Bukit dekat Kp. Cabing; Hutan rawa Pulau Utin;	1153.7
1.4. Areas that Contain Habitat of Temporary Use by Species or Congregations of Species	N		
<b>HCV 2. Natural Landscapes &amp; Dynamics</b>			

2.1. Large Natural Landscapes with Capacity to Maintain Natural Ecological Processes and Dynamics	N		
2.2. Areas that Contain Two or More Contiguous Ecosystems	N		
2.3. Areas that Contain Representative Populations of Most Naturally Occurring Species	N		
<b>HCV 3. Rare or Endangered Ecosystems</b>	Y	Sempadan S. Sayu, hutan rawa S. Sayu; Lereng Belungai, Nek Dolong, Bukit Sayu; Hutan rawa Pulau Utin	701.5
<b>HCV 4. Environmental Services</b>			
4.1 Areas or Ecosystems Important for the Provision of Water and Prevention of Floods for Downstream communities	Y	Sempadan S. Sayu, Hutan rawa S. Sayu; S. Belungai; S. Embangai; S. Sansat; S. Abor; S. Ngenyangas; S. Belobo; S. Tumbang; S. Nek Kambing dan Nek Lambun; S. Dawak, sarang tua buaya jolong, pekong keramat buaya Sekait; S. Pangal; S. Pelunjung; S. Bawang Kecil; Hutan Sekunder Lereng Belungai, Nek Dolong, Bukit Sayu; Bukit Abor; Bukit Bungkang; Bukit dekat Kp. Cabing; Buffer hutan lindung; Hutan rawa Pulau Utin; Sawah	1992.0
4.2. Areas Important for the Prevention of Erosion and Sedimentation			
4.3. Areas that Function as Natural Barriers to the Spread of Forest or Ground Fire			
<b>HCV5. Natural Areas Critical for Meeting the Basic Needs of Local People</b>	Y	Sawah	226.3
<b>HCV6. Areas Critical for Maintaining the Cultural Identity of Local Communities</b>	Y	Sempadan S. Dawak, sarang tua buaya jolong, pekong keramat buaya Sekait; Hutan keramat Nek Ucing; dan Hutan adat Embangai Hilir	141.5
<b>Total HCV areas</b>			<b>1995.9</b>

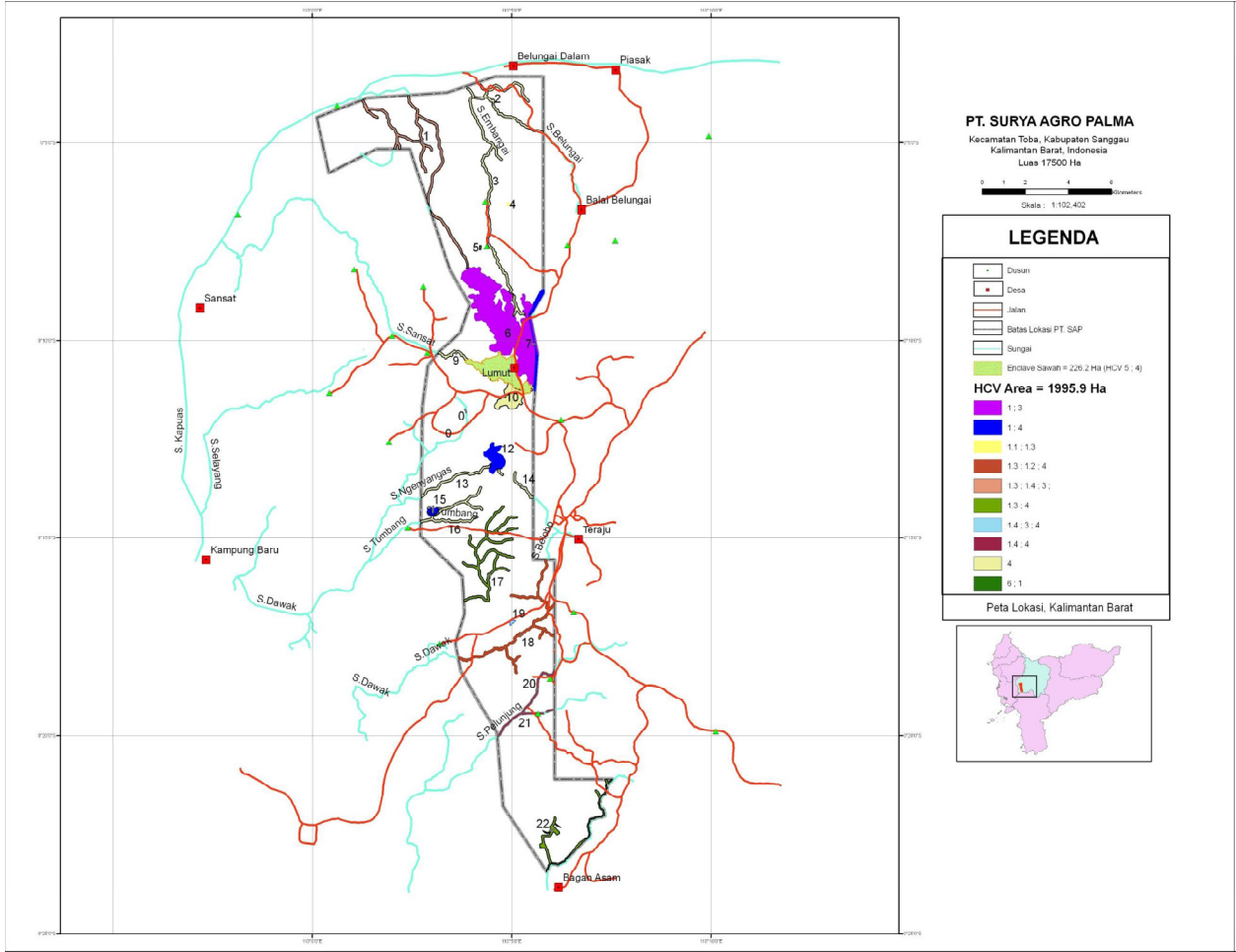
**List of Legal documents, regulatory permits and property deeds related to the area assessed:**

The list of permits and licenses obtained by the company are as follows:

No	Item	No SK/Tanggal persetujuan/Dept. penerbit	Remarks
1	Location permit	<ul style="list-style-type: none"> <li>Regent Decree of Sanggau No: 395/PEM/2009 dated 20<sup>th</sup> November 2009 with an extension of No. 508, dated 12<sup>th</sup> November 2012.</li> </ul>	IL : 17,500 Ha
2	Environmental permit	<ul style="list-style-type: none"> <li>No. 108/BLHD/2006.</li> </ul>	

3	Plantation Operational License	<ul style="list-style-type: none"> <li>• Regent of Sanggau, No.277 dated 7<sup>th</sup> July 2010.</li> </ul>	
---	--------------------------------	---	--

**Location map**



**Figure 1: Location of PT Surya Agro Palma Area and HCV Map.**

The areas proposed for new plantings by PT SAP are the unplanted areas in the location permit of PT SAP, which have been agreed by the owners of the land through the FPIC (free, prior and informed consent) process. Land development and planting of oil palm began in April 2011.

PT SAP’s development plan had incorporated the findings from SEIA (AMDAL), HCV Assessments and Social Impact Assessments into their operational plans. As part of the process of free, prior and informed consent (FPIC), procedures to ensure that social and environmental aspects are addressed in the development of the oil palm plantations by PT SAP, includes consultation with the relevant stakeholders; which provides opportunities for communication

and sharing of information, opinions and suggestions between the PT SAP and the affected stakeholders to facilitate mutually beneficial progress. PT SAP has established standard operating procedures for land acquisition and compensation procedures based on the principle of free, prior and informed consent. PT GAL has also established the complaint and grievance procedures so that the problem solving process is done through discussion and mutual deliberation.

Proposed time plan for new plantings is described below:

		TDT	2014	2015	2016	2017	Total
Compensation		6000					6300
Land Clearing & Infrastructure		4800	900	400			
Planting	Inti	4800	300				5100
	Plasma	200	600	400			1200

## 2. SEIA and HCV Management & Planning Personnel

### Organizational information and contact persons.

Company name	PT. Surya Agro Palma
Office Address	Artha Graha Building 10 <sup>th</sup> Floor, Jl. Jend Sudirman Kav 52 – 53, Jakarta Indonesia 12190
Telephone/Fax	Phone : 021-5151938 Fax : 021-5151917
Contact Person	Director – Salim bin Abdul Rahim Email Address: salim.rahim@genting.com Group Sustainability Manager – Dr Faizal Amri Amran Email Address: faizal.amri@genting.com
Geographical Location	Latitude 110°0'6.369" to 110°7'32.410" Longitude 0°3'10.467" - 0°23'26.958" West Kalimantan

### Personnel involved in planning and implementation

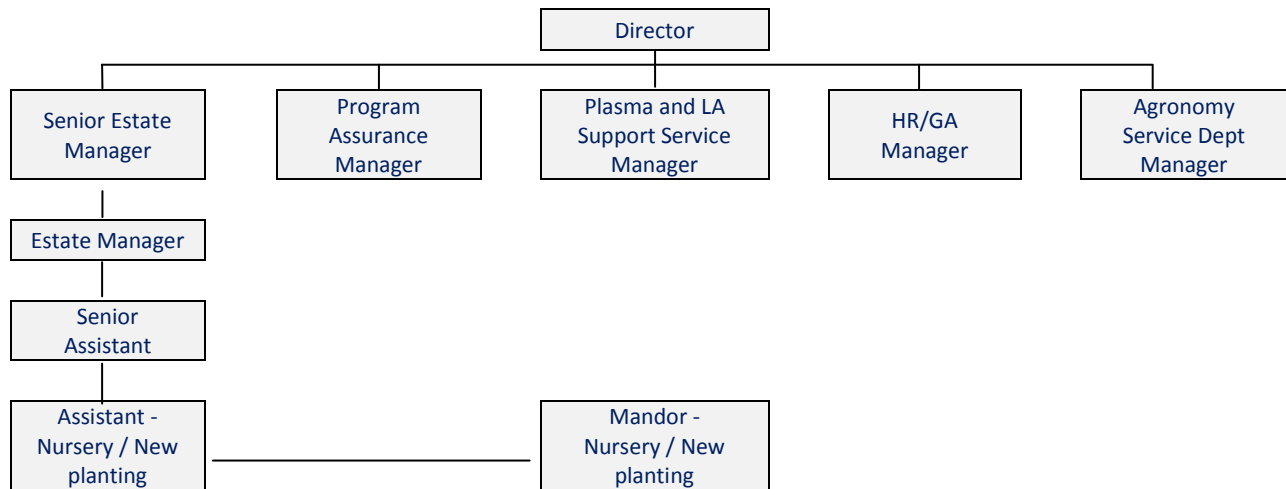
The process of HCV and SIA assessment and preparation of management and monitoring plans for PT Surya Agro Palma was implemented in phases involving several parties: Estate Department, Human Resources, Program Assurance, Agronomy Service Department, Plasma Support Service and Land Acquisition Department and the whole process is in accordance with the plans facilitated by an independent consultant from Aksenta. The details of the parties

involved in the HCV and SIA development and preparation of management and monitoring plans are shown in **Appendix 1 & 2**.

The implementation of the HCV and SIA management & monitoring plans in the field will be implemented by experienced personnel who possess a high level of dedication of knowledge and special technical skills. Program assurance department, CSR department and Human Resources, stationed at the location, will provide support in these activities. The Estate Manager is directly responsible on the implementation of the plans of management and monitoring. In addition, the Senior Estate Manager is accountable in fulfilling of the requirements for the plan and as well as responsible in analyzing the input results from the monitoring plans. The Group Manager is accountable and responsible to ensure that the Overall Development Plan including the management of HCV and SIA is implemented according to the time plan and budget. The detail of the responsibilities and roles of the HCV and SIA development and preparation of management plans and monitoring are summarized in the “Summary Report of SEIA and HCV Assessments PT Surya Agro Palma” document.

The Head Office, Estate Department, Human Resources, and Program Assurance Department will provide the overall support in the implementation of the development plan.

**NPP management organization chart**



**Stakeholders to be involved**

The process of the HCV and SIA assessment and preparation of management and monitoring plans for PT SAP also involved relevant stakeholders such as governmental agencies (Natural Resource Conservation Department-BKSDA) West Kalimantan Province, The Plantation Office Sanggau Regency, Environment Agency of Sanggau Regency, leaders of communities, local NGOs, Head of District, and Head of Villages.

Consultations were also conducted with the relevant stakeholders to provide opportunities for communication and the sharing of the information, opinions and suggestions between the Company and the workers, contractors, suppliers, smallholders (plasma), consumers, government agencies and communities to facilitate mutually beneficial progress. This is also part of the process of free, prior and informed consent procedures to ensure that a harmonious balance with social and environmental aspects are maintained in the development of the oil palm planting project between PT SAP and its stakeholders.

The Stakeholders' consultation was held on 28<sup>th</sup> May 2010 at Teraju – Toba District, Sanggau Regency, and West Kalimantan. There were 18 participants present during this consultation meeting (**Appendix 1**). The summary of the consultation with highlights of key suggestions from the consultation on HCV and SIA PT Surya Agro Palma with Stakeholder are given below:

- a. Presentation from Aksenta (consultant accredited and approved by RSPO) regarding the results of the HCV (High Conservation Value Assessment) and the management and monitoring plan of HCV in PT SAP.
- b. Presentation from Aksenta (consultant accredited and approved by RSPO) regarding the results of the SIA (Social Impact Assessment) and the management and monitoring plan of SIA in PT SAP.

Key issues raised for discussion during the Stakeholders' consultation' include:

- a. Local communities in the area surrounding PT SAP support the operational activities of PT SAP, in principle.
- b. The people in the villages around the concession of PT SAP are hoping for jobs opportunities/contracts and local employment.
- c. River pollution concerns that may be caused by the activities of the oil palm plantation.

### **Summary of Management and Mitigation plans (SEIA)**

The SEIA and preparation of management and monitoring plan for PT SAP is prepared under the Cooperation Agreement between PT Surya Agro Palma and AMDAL consultant CV Integraba Citra Persada, Pontianak. The preparation of such report refers to the result of identification and analysis of Social Impact Assessment in the area of PT SAP, Sanggau Regency, West Kalimantan Province and the frame of reference of the agreed work.

The Management and Mitigation Plan as per SIA Assessment and AMDAL document of PT Surya Agro Palma is described as following:

- a. Social management should be oriented towards the management and mitigation of social matters involving the local communities. Efforts to manage these social matters to answer the needs of the community include the management and development of cooperatives and farmers Plasma Scheme, increase revenue and stability of income.
- b. The aim of social management should be oriented to achieve social cohesion. Where the management has not yet developed optimal social communication with the local

community or where the social impact analysis related to the degree of proximity between the management and the public showed the reactive (negative relationship patterns), these situations should be used as a basis for evaluating and developing social cohesion improvements for the social management of the communities around the project. However, where the social situation is conducive, it will ensure the smooth operation of the project.

- c. Human resource oriented and strengthening the local economy. PT SAP management needs to respond to the needs of the local community for employment in the project by establishing a special recruitment mechanism. In view of the limited experience and knowledge among the local people in the area to carry out the required work, the Company needs to develop an agreement on the terms of recruitment, training, problem solving and termination of employment that involves government officials and representatives of rural communities. This agreement by both parties covers the labor recruitment and resolution of employment issues that may arise after recruitment. In addition, community empowerment and strengthening of local economies could be developed through education scholarship assistance, social services and free medicine, technical training in agriculture and industry.
- d. The Company, in partnership with communities and local governments around the village area can also propose and support joint requests conveyed to the government at district and provincial levels, on matters such as road improvement in the district and villages, as well as construction of public facilities.

### **Company Social Impact Management for Social sustainability of local communities**

- I. Impact to human capital
  - a. Job opportunities
    - Collect data on the current means of livelihood
    - Provide information on the job opportunities and qualifications required.
    - Ensure announcements on the job opportunities are easily accessible to all
    - Give priority to members of local communities in filling available job vacancies in accordance with the qualifications or skills that they have.
    - Provide training to new workers to equip them with the competency to fulfill their job requirements.
  - b. Improvement on the level of community education
    - Collect data on the number of available education facilities and infrastructure.
    - Identify and record the highest level of education received by the community.
    - Identify the number of people that have and have not received formal education.
  - c. Increased public awareness of good agricultural practice
    - Build a cooperative partnership with Koperasi to facilitate them to obtain information of palm oil agronomy.



- d. Development of alternative income generating activities to safeguard their economic standing after post-development of the project
  - Identify the number of affected communities that can be absorbed into the workforce by the Company's plantations
  - Identify potential areas that could be developed into other alternative economic development program
  - Plan a community development program, with its progress to be monitored to ensure improvement of the economic status of the community.

## II. Impact to natural capital

- e. Companies' participation in managing water quality
  - Proper management of domestic and scheduled waste.
  - Routine quality monitoring of waste water discharged into rivers.
  - Monitoring the water quality of natural rivers
  - Socialize the management of the riparian areas with local community and village official.
- f. Land acquisition should also receive community approval
  - Inventory of community land ownership
  - Survey with the related parties in definite delineation of land ownership for acquisition purpose.
  - Create a land acquisition agreement with the respective legal owner of the land without any pressure or coercion.
  - Related parties or government authorities should be involved to solve any problematic land acquisition.
- g. Social Impact Management to social sustainability on internal estate communities
  - Provide a healthy and safe working environment  
Sustainability Department provides leadership and support for PT SAP management in the environmental, occupational health and safety aspects.

## III. Provision of facilities for workers

- a. Available housing for workers to be equipped with basic facilities and adequate electricity and water supply.
- b. Clinic and doctor/paramedic is available
- c. Provide training on proper care and maintenance of housing and other supporting facilities, maintaining clean environment, housekeeping, zero burning and conservation of natural resources.

## Summary of Management and Mitigation Plans (HCV)

Summary of HCV findings at PT SAP, Toba District, Sanggau Regency, West Kalimantan.

**Table 2 : Summary of HCV findings**

HCV Component	HCV Exist? Y/N	HCV Area	Area (Ha)
<b>HCV 1.Areas with Important Levels of Biodiversity</b>			
1.1. Areas that Contain or Provide biodiversity Support Function to Protection or Conservation Areas	Y	Hutan keramat Nek Ucing; Buffer hutan lindung	50.9
1.2. Critically Endangered Species	Y	Sempadan S. Dawak, sarang tua buaya jolong, pekong keramat buaya Sekait; Sempadan S. Pelunjung; Sempadan S. Bawang Kecil; Hutan keramat Nek Ucing	251.4
1.3. Areas that Contain Habitat for Viable Populations of Endangered, Restricted Range or Protected Species	Y	Sempadan S. Sayu, hutan rawa S. Sayu; S. Abor; S. Nek Kambing dan Nek Lambun; S. Dawak, sarang tua buaya jolong, pekong keramat buaya Sekait; S. Pangal; Hutan adat Embangai Hilir; Hutan Sekunder Lereng Belungai, Nek Dolong, Bukit Sayu; Bukit Bungkang; Bukit dekat Kp. Cabing; Hutan rawa Pulau Utin;	1153.7
1.4. Areas that Contain Habitat of Temporary Use by Species or Congregations of Species	N		
<b>HCV 2. Natural Landscapes &amp; Dynamics</b>			
2.1. Large Natural Landscapes with Capacity to Maintain Natural Ecological Processes and Dynamics	N		
2.2. Areas that Contain Two or More Contiguous Ecosystems	N		
2.3. Areas that Contain Representative Populations of Most Naturally Occurring Species	N		
<b>HCV 3. Rare or Endangered Ecosystems</b>	Y	Sempadan S. Sayu, hutan rawa S. Sayu; Lereng Belungai, Nek Dolong, Bukit Sayu; Hutan rawa Pulau Utin	701.5
<b>HCV 4. Environmental Services</b>	Y		1992.0
4.1 Areas or Ecosystems Important for the Provision of Water and Prevention of Floods for Downstream communities		Sempadan S. Sayu, hutan rawa S. Sayu; S. Belungai; S. Embangai; S. Sansat; S. Abor; S. Ngenyangas; S. Belobo; S. Tumbang; S. Nek Kambing dan Nek Lambun; S. Dawak, sarang tua buaya jolong, pekong keramat buaya Sekait; S. Pangal; S. Pelunjung; S.	
4.2. Areas Important for the			

Prevention of Erosion and Sedimentation		Bawang Kecil; Hutan Sekunder Lereng Belungai, Nek Dolong, Bukit Sayu; Bukit Abor; Bukit Bungkang; Bukit dekat Kp. Cabing; Buffer hutan lindung; Hutan rawa Pulau Utin; Sawah	
4.3. Areas that Function as Natural Barriers to the Spread of Forest or Ground Fire			
<b>HCV5. Natural Areas Critical for Meeting the Basic Needs of Local People</b>	Y	Sawah	226.3
<b>HCV6. Areas Critical for Maintaining the Cultural Identity of Local Communities</b>	Y	Sempadan S. Dawak, sarang tua buaya jolong, pekong keramat buaya Sekait; Hutan keramat Nek Ucing; dan Hutan adat Embangai Hilir	141.5
<b>Total HCV areas</b>			<b>1995.9</b>

The activity of Management and Monitoring Plan of High Conservation Area of PT SAP were prepared for the certification for RSPO. The following is a summary of HCV management recommendations that are applicable for the whole PT SAP concession for the HCVs identified in the 17,500 ha concession area is:

No	HCV Area	Inventory and identification of land cover conditions in the HCV area (ha)	Demarcation of HCV area (km)	Maintenance boundary signs (km)	Areal Protection, Flora and Fauna				Rehabilitation and Enrichment in the HCV area (Ha)	Counseling to the Community	Employee training	SOP Completion / Improvement	Organization	Consultation with stakeholders
					Sign board (pcs)	Hunting and Destructive Flora Prohibition Signboards (pcs)	Maintenance Sign boards	Patrol (ha)						
1	Sempadan S. Sayu, hutan rawa S. Sayu	180.1	36.02	36.02	3	3	6	180.1	180.1	o Desa Lumut o Desa Belungai Dalam o Desa Balai Belungai o Desa Teraju dan o Desa Bagan Asam	20 Orang	Kantor kebun PT Surya Agro Palma	Kantor kebun PT Surya Agro Palma	Penyusunan MoU tentang perburuan satwa liar: dilakukan di Kantor kebun PT Surya Agro Palma
2	Sempadan S. Belungai	76.9	15.38	15.38	2	2	4	76.9	76.9					
3	Sempadan S. Embangai	137.4	27.48	27.48	3	3	6	137.4	137.4					
4	Sempadan S. Sansat	20.9	4.18	4.18	1	1	2	20.9	20.9					
5	Sempadan S. Abor	45.3	9.06	9.06	1	1	2	45.3	45.3					
6	Sempadan S. Ngenyangas	42.3	8.46	8.46	1	1	2	42.3	42.3					
7	Sempadan S. Belobo	17	3.40	3.40	1	1	2	17	17					
8	Sempadan S. Tumbang	65.9	13.18	13.18	2	2	4	65.9	65.9					
9	Sempadan S. Nek Kambing dan Nek Lambun	164.5	32.90	32.90	3	3	6	164.5	164.5					
10	Sempadan S. Dawak, sarang tua buaya jolong, pekong keramat buaya Sekait	137.6	27.52	27.52	3	3	6	137.6	137.6					
11	Sempadan S. Pangal	29.1	5.82	5.82	1	1	2	29.1	29.1					
12	Sempadan S. Pelunjung	30.4	6.08	6.08	1	1	2	30.4	30.4					
13	Sempadan S. Bawang Kecil	81.3	16.26	16.26	2	2	4	81.3	81.3					
14	Hutan keramat Nek Ucing	2.1	0.21	0.21	1	1	2	2.1	2.1					
15	Hutan adat Embangai Hilir	1.8	0.18	0.18	1	1	2	1.8	1.8					
16	Lereng Belungai, Nek Dolong, Bukit Sayu	517.4	10.35	10.35	2	2	4	517.4	517.4					
17	Buffer hutan lindung	50.9	2.55	2.55	1	1	2	50.9	50.9					
18	Hutan rawa Pulau Utin	4	0.40	0.40	3	3	6	4	4					
19	Bukit Abor	90.8	1.82	1.82	1	1	2	90.8	90.8					
20	Bukit Bungkang	63.4	1.27	1.27	1	1	2	63.4	63.4					
21	Bukit dekat Kp. Cabling	10.5	0.21	0.21	1	1	2	10.5	10.5					
22	Sawah	226.3	4.53	4.53	-	-	-	-	-					
Periode dan waktu Pengelolaan KBKT		Hanya sekali dan dilakukan pada RKAP 2014	Secara bertahap dan dimulai pada RKAP 2014	Setiap Tahun	Secara bertahap dan dimulai pada RKAP 2014	Secara bertahap dan dimulai pada RKAP 2014	Setiap Tahun	Setiap minggu atau sebulan sekali dan dimulai pada RKAP 2014	Secara bertahap dan mulai dilakukan pada RKAP 2014	Setiap tahun dan dimulai pada RKAP 2014	Setiap tahun dan dimulai pada RKAP 2014	Hanya sekali dan dilakukan pada RKAP 2014	Hanya sekali dan dilakukan pada RKAP 2014	Triwulan

HCVA Activity Monitoring Plan in the area of oil palm plantations PT SAP is designed to cover the period of 5 (five) years from 2014 to 2018.

HCV type	Location	Monitored Indicator	Purpose of monitoring	Measurement baseline	Monitoring Methods	
					Data collection and analysis methods	Monitoring period
<b>Areas with Important Levels of Biodiversity and Natural Landscapes &amp; Dynamics</b>	<ul style="list-style-type: none"> <li>- Sempadan S. Sayu, hutan rawa S. Sayu;</li> <li>- Sempadan S. Abor;</li> <li>- Sempadan S. Nek Kambing dan Nek Lambun;</li> <li>- Sempadan S. Dawak, sarang tua buaya jolong, pekong keramat buaya Sekait;</li> <li>- Sempadan S. Pangal;</li> <li>- Sempadan S. Pelunjung;</li> <li>- Sempadan S. Bawang Kecil; Hutan Sekunder Lereng Belungai, Nek Dolong, Bukit Sayu;</li> <li>- Bukit Bungkang;</li> <li>- Bukit dekat Kp. Cabing;</li> <li>- Buffer hutan lindung;</li> <li>- Hutan rawa Pulau Utin;</li> </ul>	<ul style="list-style-type: none"> <li>• Intensitas gangguan terhadap lokasi yang memiliki NKT 1.1, 1.2, 1.3 dan 3 termasuk bahaya dari kebakaran.</li> <li>• Perkembangan kondisi penutupan lahan pada kawasan yang memiliki NKT 1.1, 1.2, 1.3 dan 3.</li> <li>• Realisasi pelaksanaan kegiatan pemantauan dan pengamanan terhadap kawasan yang memiliki NKT 1.1, 1.2, 1.3 dan 3.</li> </ul>	<ul style="list-style-type: none"> <li>• Mengetahui intensitas gangguan terhadap lokasi yang memiliki NKT 1.1, 1.2, 1.3 dan 3 termasuk bahaya dari kebakaran.</li> <li>• Mengetahui perkembangan kondisi penutupan lahan secara periodik di lokasi yang memiliki NKT 1.1, 1.2, 1.3 dan 3.</li> <li>• Mengetahui realisasi pelaksanaan kegiatan pemantauan dan pengamanan terhadap kawasan yang memiliki NKT 1.1, 1.2, 1.3 dan 3</li> </ul>	<p><b>Baik :</b></p> <p>Tidak ada gangguan terhadap kawasan NKT 1.1, 1.2, 1.3 dan 3 dan kondisi penutupan lahan tetap atau lebih baik dibandingkan dengan kondisi sebelumnya.</p> <p><b>Sedang:</b></p> <p>Kawasan NKT 1.1, 1.2, 1.3 dan 3 yang terganggu rendah (&lt; 25%) dan tingkat gangguan sedang atau kawasan NKT 1.1, 1.2, 1.3 dan 3 yang terganggu sedang (&lt; 50%) dan tingkat gangguan rendah, serta kondisi penutupan lahannya mengalami penurunan sebesar 25% dibandingkan dengan kondisi sebelumnya.</p> <p><b>Buruk :</b></p> <p>Kawasan NKT 1.1, 1.2, 1.3 dan 3 yang terganggu besar (&gt; 50%) dan tingkat gangguan tinggi, serta kondisi penutupan lahannya mengalami penurunan sebesar &gt; 50% dibandingkan dengan kondisi sebelumnya.</p>	<p><u>Alat dan bahan</u> : Peta kerja, GPS, kamera, teropong, kompas, tally sheet, meteran, tambang plastik, dan alat-alat tulis.</p> <p><u>Metode pengukuran</u> : Pengamatan langsung di kawasan yang memiliki NKT 1.1, 1.2, 1.3 dan 3 yang dikelola.</p> <p><u>Metode analisis data</u> : Analisis deskriptif dari masing-masing periode pemantauan.</p> <p><u>Metode penyimpulan</u> : Jika nilai indikator yang diperoleh dari hasil pemantauan termasuk sedang dan buruk, maka kegiatan pengelolaan di kawasan yang memiliki NKT 1.1, 1.2, 1.3 dan 3 yang telah dilakukan perlu ditingkatkan.</p>	<p>Untuk intensitas gangguan dilakukan sebulan sekali, sedangkan indikator pemantauan lainnya dilakukan satu tahun sekali dan dimulai pada RKAP tahun 2014</p>
<b>Environmental Services</b>	<ul style="list-style-type: none"> <li>- Sempadan S. Sayu, hutan rawa S. Sayu;</li> <li>- Sempadan S. Belungai;</li> </ul>	<ul style="list-style-type: none"> <li>• Intensitas gangguan terhadap areal yang memiliki NKT 4 termasuk bahaya dari kebakaran.</li> </ul>	<ul style="list-style-type: none"> <li>• Mengetahui intensitas gangguan terhadap areal yang memiliki NKT 4 serta perubahan kualitas air pada masing-</li> </ul>	<p><b>Baik:</b></p> <p>Lebar sungai tetap; parameter kualitas air sungai dan mata air (pH air berkisar</p>	<p><u>Alat dan bahan</u> : Peta kerja, GPS, kamera, teropong, kompas, tally sheet, meteran, tambang plastik,</p>	<p>Untuk intensitas gangguan dilakukan sebulan sekali, sedangkan indikator pemantauan lainnya dilakukan satu tahun sekali</p>

	<ul style="list-style-type: none"> <li>- Sempadan S. Embangai;</li> <li>- Sempadan S. Sansat;</li> <li>- Sempadan S. Abor;</li> <li>- Sempadan S. Ngenyangas;</li> <li>- Sempadan S. Belobo;</li> <li>- Sempadan S. Tumbang;</li> <li>- Sempadan S. Nek Kambing dan Nek Lambun;</li> <li>- Sempadan S. Dawak, sarang tua buaya jolong, pekong keramat buaya Sekait;</li> <li>- Sempadan S. Pangal;</li> <li>- Sempadan S. Pelunjung;</li> <li>- Sempadan S. Bawang Kecil; Hutan Sekunder Lereng Belungai, Nek Dolong, Bukit Sayu;</li> <li>- Bukit Abor;</li> <li>- Bukit Bungkang;</li> <li>- Bukit dekat Kp. Cabing;</li> <li>- Buffer hutan lindung;</li> <li>- Hutan rawa Pulau Utin;</li> <li>- Sawah</li> </ul>	<ul style="list-style-type: none"> <li>• Perubahan lebar sungai</li> <li>• Perubahan kualitas air sungai.</li> <li>• Perubahan biota perairan.</li> </ul>	<p>masing lokasi yang memiliki NKT 4 .</p> <ul style="list-style-type: none"> <li>• Mengetahui perubahan lebar sungai, kualitas air sungai dan mata air, serta biota perairan sungai.</li> </ul>	<p>antara 6-9, TSS <math>\leq</math> 50 mg/l, N-NO<sub>3</sub> <math>\leq</math> 10 ppm, P<sub>2</sub>O<sub>4</sub> <math>\leq</math> 0,5 ppm, dan COD <math>\leq</math> 10 ppm); dan biota perairan di sungai tetap atau lebih baik dibandingkan sebelumnya.</p> <p><b>Sedang:</b></p> <p>Lebar sungai mengalami peningkatan &gt;25%; lebih dari 50% dari parameter kualitas air sungai dan mata air (pH, TSS, NH<sub>4</sub>, N-NO<sub>3</sub>, P<sub>2</sub>O<sub>4</sub> dan COD) sesuai dengan baku mutu yang berlaku menurut PP No. 82 tahun 2001; biota perairan di sungai mengalami penurunan sebesar &lt; 25% (lebih jelek) dibandingkan sebelumnya.</p> <p><b>Buruk :</b></p> <p>Lebar sungai mengalami penurunan; kurang dari 50% dari parameter kualitas air sungai dan mata air (pH, TSS, NH<sub>4</sub>, N-NO<sub>3</sub>, P<sub>2</sub>O<sub>4</sub> dan COD) sesuai dengan baku mutu yang berlaku menurut PP No. 82 tahun 2001; dan biota perairan di sungai mengalami penurunan &gt; 50% (lebih jelek) dibandingkan sebelumnya.</p>	<p>dan alat-alat tulis.</p> <p><u>Metode pengukuran</u> : Pengamatan langsung di kawasan yang memiliki NKT 4 yang dikelola.</p> <p><u>Metode analisis data</u> : Analisis deskriptif dari masing-masing periode pemantauan.</p> <p><u>Metode penyimpulan</u> : Jika nilai indikator yang diperoleh dari hasil pemantauan termasuk sedang dan buruk, maka kegiatan pengelolaan di kawasan yang memiliki NKT 4 yang telah dilakukan perlu ditingkatkan.</p>	<p>dan dimulai pada RKAP tahun 2014</p>
<p><b>Natural Areas Critical for Meeting the Basic Needs of Local People and Areas Critical for Maintaining the Cultural Identity of Local Communities</b></p>	<ul style="list-style-type: none"> <li>- Sempadan S. Dawak, sarang tua buaya jolong, pekong keramat buaya Sekait;</li> <li>- Hutan keramat Nek Ucing;</li> <li>- Hutan adat Embangai Hilir ,</li> <li>- Sawah</li> </ul>	<ul style="list-style-type: none"> <li>• Intensitas gangguan terhadap lokasi yang memiliki NKT 5 dan 6</li> <li>• Perkembangan kondisi pada kawasan yang memiliki NKT 5 dan 6.</li> <li>• Realisasi pelaksanaan kegiatan pemantauan dan pengamanan terhadap kawasan yang memiliki NKT 5 dan 6</li> </ul>	<ul style="list-style-type: none"> <li>• Mengetahui intensitas gangguan terhadap lokasi yang memiliki NKT 5 dan 6 .</li> <li>• Mengetahui perkembangan secara periodik di lokasi yang memiliki NKT 5 dan 6.</li> <li>• Mengetahui realisasi pelaksanaan kegiatan pemantauan dan pengamanan terhadap kawasan yang memiliki NKT 5 dan 6.</li> </ul>	<p><b>Baik :</b></p> <p>Tidak ada gangguan terhadap kawasan NKT 5 dan 6 dan kondisi lebih baik dibandingkan dengan kondisi sebelumnya.</p> <p><b>Sedang:</b></p> <p>Kawasan NKT 5 dan 6 yang terganggu rendah (&lt; 25%) dan tingkat gangguan sedang atau kawasan NKT 5 dan 6 yang terganggu sedang (&lt; 50%) dan tingkat</p>	<p><u>Alat dan bahan</u> : Peta kerja, GPS, kamera, teropong, dan alat-alat tulis.,</p> <p><u>Metode pengukuran</u> : Pengamatan langsung di kawasan yang memiliki NKT 5 dan 6 yang dikelola.</p> <p><u>Metode analisis data</u> : Analisis deskriptif dari masing-masing periode pemantauan.</p> <p><u>Metode penyimpulan</u> : Jika nilai indikator yang diperoleh dari hasil pemantauan termasuk sedang dan buruk,</p>	<p>Untuk intensitas gangguan dilakukan sebulan sekali, sedangkan indicator pemantauan lainnya dilakukan satu tahun sekali dan akan dimulai pada RKAP tahun 2014</p>

				<p>gangguan rendah dibandingkan dengan kondisi sebelumnya.</p> <p><b>Buruk :</b></p> <p>Kawasan NKT 5 dan 6 yang terganggu besar (&gt; 50%) dan tingkat gangguan tinggi, dibandingkan dengan kondisi sebelumnya.</p>	<p>maka kegiatan pengelolaan di kawasan yang memiliki NKT 5 dan 6 yang telah dilakukan perlu ditingkatkan.</p>	
--	--	--	--	--	--	--

### **Internal responsibility**

The statement of acceptance of responsibility for assessment.

The document is summary of assessment result of HCV, SIA, and AMDAL for PT SAP and has been approved by the management of PT SAP.

Prepared By

Approved By



Dr. Faizal Amri Amran

Group Sustainability Manager



Salim Bin Abdul Rahim

Director



**Appendix 1 - List of stakeholders consulted during HCV Assessment**

Date of Consultation: 28<sup>th</sup> May 2010.

**Outside Stakeholders participated:**

FORM - PROJ - 02F

**DAFTAR HADIR  
PUBLIC CONSULTATION**

**Aksenta**  
accelerate life


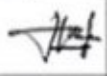



---

Nama PT : PT. SAP Tanggal : 28 - May 2010  
 Lokasi : TERAJU Waktu : 08.00 - 12.00  
 Asesmen : \_\_\_\_\_

No	Nama	Bagian/Jabatan	Alamat dan Nomor Kontak	Tanda Tangan	
1.	DARIUS ATEK	Ketua FKPM	TERAJU		
2.	T. ANQIM	Kj. Adat	Nak. Cikon		
3.	L. ASUI R	Ka. adat	Lumut		
4.	L. LONGKI	Kelua Kt 07	Ketobong		
5.	Aleisius Sabuan	Tokoh masyarakat	UG. ketobong		
6.	Dampo	K. Adat	MG. ketobong.		
7.	A. LEHOK	MAJAKAT	Manangkup		
8.	Kedem	Tani	M Ketobong		
9.	H. UPMAR	Oras	DSN Sekanday		
10.	Jamilia <del>KADAT</del>	KADAT	Dusun mangkup		
11.	RADEBARDON	KOTUA ADAT	DES BELUMGAIDEM		
12.	Slamat	KETUA ADAT	DSN Bynakang		

Halaman : \_\_\_\_\_

DAFTAR HADIR  
PUBLIC CONSULTATION

No	Nama	Bagian/Jabatan	Alamat dan Nomor Kontak	Tanda Tangan	
13	XSTRIDUS	KIT. R. T. 02 Bony	ABN. Bonykang		
14	SASOT	Wakil. Adat	ASN. Bonykang		
15	JANAT UMAN	Kadot	roan sy panin		
16	SUNFAT.S.SUPORDI	KADUS	DSN ME PASIR		
17	AJANG.	KADES. Bl. Balam	Sapu Balam, Des. Meli. Siam		
18	SAIYON	Kang Pom. Koe. Tobo	Taraju		

PT Surya Agro Palma management representatives participated

FORM - PROJ - 02A

DAFTAR HADIR  
OPENING MEETING

**Aksenta**  
accentuate life

(PEMETAAN PARTISIPATIF)

Nama PT : Surya Agro Palma  
Lokasi : Kec. Toba, Kab. Sanggau  
Asesmen : HCV dan SIA

Tanggal : 22 Mei 2010  
Waktu : 20.00

No	Nama	Nomor kontak	Kebun / Jabatan	Tanda Tangan	
1	ABDUL MUIS		SURVEYOR		
2	DALDIYONO		-		
3	WANTORO		Asisten Diklat		
4	ENDANG.		LA		
5	SUPANG		SURVEYOR		
6	WAWAN		-		
7	LEOPE AMRI M.		FB		
8	Idung		Aksenta.		
9	YUNUS		GIS		
10	Fredy Richard		LA.		
11	An dai Novi		Aksenta		
12	Gena Lysistrata		AKSENTA		
13	M. Magesari		AKSENTA		
14	Ganip Canawan		Aksenta		
15	Wibowo Diantiko		HCV - Aksenta		

Halaman : \_\_\_\_\_