

## **NPP NOTIFICATION STATEMENT**

**Date of notification : September 27, 2017**

**Name of Grower : PT Gemilang Makmur Subur**

**Name of Subsidiary : Bumitama Agri Limited**

**RSPO Membership No. : 1-0043-07-000-00 since 7 October 2007**

### Location of Proposed New Planting

1. Head office address : Jl. Melawai Raya No.10, South Jakarta District, DKI Jakarta Province, Indonesia
2. Grower address : Laman Satong Village – Matan Hilir Utara Sub District, Ketapang District, West Kalimantan Province, Indonesia
3. Business permit : Head of Ketapang District decree no.773/DISBUN-D/2015 dated on 27 November 2015 regarding plantation business permit (IUP)
4. Type of Business : Oil Palm Plantation
5. Size (ha) : ± **5,190 ha** (total areas based on location permit) where refer to **Table 1**. Whereas, the total of proposed new planting areas is **473.00 ha**.
6. Contact persons : Lim Sian Choo
7. E-mail address : [lim.sian.choo@bumitama.com](mailto:lim.sian.choo@bumitama.com)
8. Phone / fax : +62-21-27838200 / +62-21-72798665
9. Website : [www.bumitama-agri.com](http://www.bumitama-agri.com)
10. Spatial Reference : PT GMS area is 01° 24' 40.0" - 01° 30' 35.0" S and 110° 12' 53.0" - 110° 19' 00.0" E (based on HCV document) - see **Figure 1 & 2**. Whereas, proposed new planting areas is 01° 25' 00.0" - 01° 28' 50.0" S and 110° 15' 00.0" - 110° 18' 55.0" E – see **Figure 3** (a & b)
11. Geograpic location :
 

North	:	<b>Permit &amp; others</b> : Gunung Tarak protected forest <b>Administrative</b> : Nek Doyan Hamlet, Kayon Utara District
<hr/>		
East	:	<b>Permit &amp; others</b> : Gunung Tarak protected forest <b>Administrative</b> : Nek Doyan Hamlet, Nanga Tayap Sub District
<hr/>		
South	:	<b>Permit &amp; others</b> : Tengkorak hill and Planttaion areas of PT DAS (ex-Golden Youth areas) <b>Administrative</b> : Muara Pawan Sub District
<hr/>		
West	:	<b>Permit &amp; others</b> : PT Kayung Agro Lestari (plantation areas) <b>Administrative</b> : Selat Karimata Sub District
12. Areas and time plan for new plantings : part of company areas is **473 ha** (based on land use map (**figure 3**)) where ex-nursery (ex-bibitan) was excluded because it has planted above year of planting 2008 (**Figure 4, Table 1** and explanation on HCV report – page 7 (subsection 1.2 – paragraph 7)) and year 2017 is time plan for new plantings as showned **Table 1**.

The proposed new planting area within the location of the plantation business permit (Izin Usaha Perkebunan, IUP) and the location permit on behalf PT GMS. The company has acquired some lands where land acquisition process has based on the FPIC process according RSPO requirement and company's procedure. Land development and planting of oil palm will begin by following the procedures of the RSPO New Planting Procedures (NPP).

**Table 1.** The summarized of land use and time-plan for new plantings

Description	Width of Area (ha)
<b>A. Land Use</b>	<b>3,217.00</b>
Oil Palm Planted in 2005 – 2008 (include Roads, ditches & infrastructure)	<b>2,940.00*</b>
Plant ex nursery 1	110.00
Plant ex nursery 2	167.00
<b>B. Conservation</b>	<b>1,500.00</b>

**RSPO New Planting Procedure Assessment Report**  
**PT Gemilang Makmur Subur – West Kalimantan Province,**  
**Indonesia**



Description	Width of Area (ha)
Conservation (HCVA+HCVMA, HCS, Peat)	1,471.00
Enclave	29.00
<b>C. Plan for New Planting year 2017</b>	<b>473.00</b>
Old shrub	50.52
Open land	277.84
Shrub	60.13
Bush	84.52
<b>Total Area (A + B + C)</b>	<b>5,190.00</b>

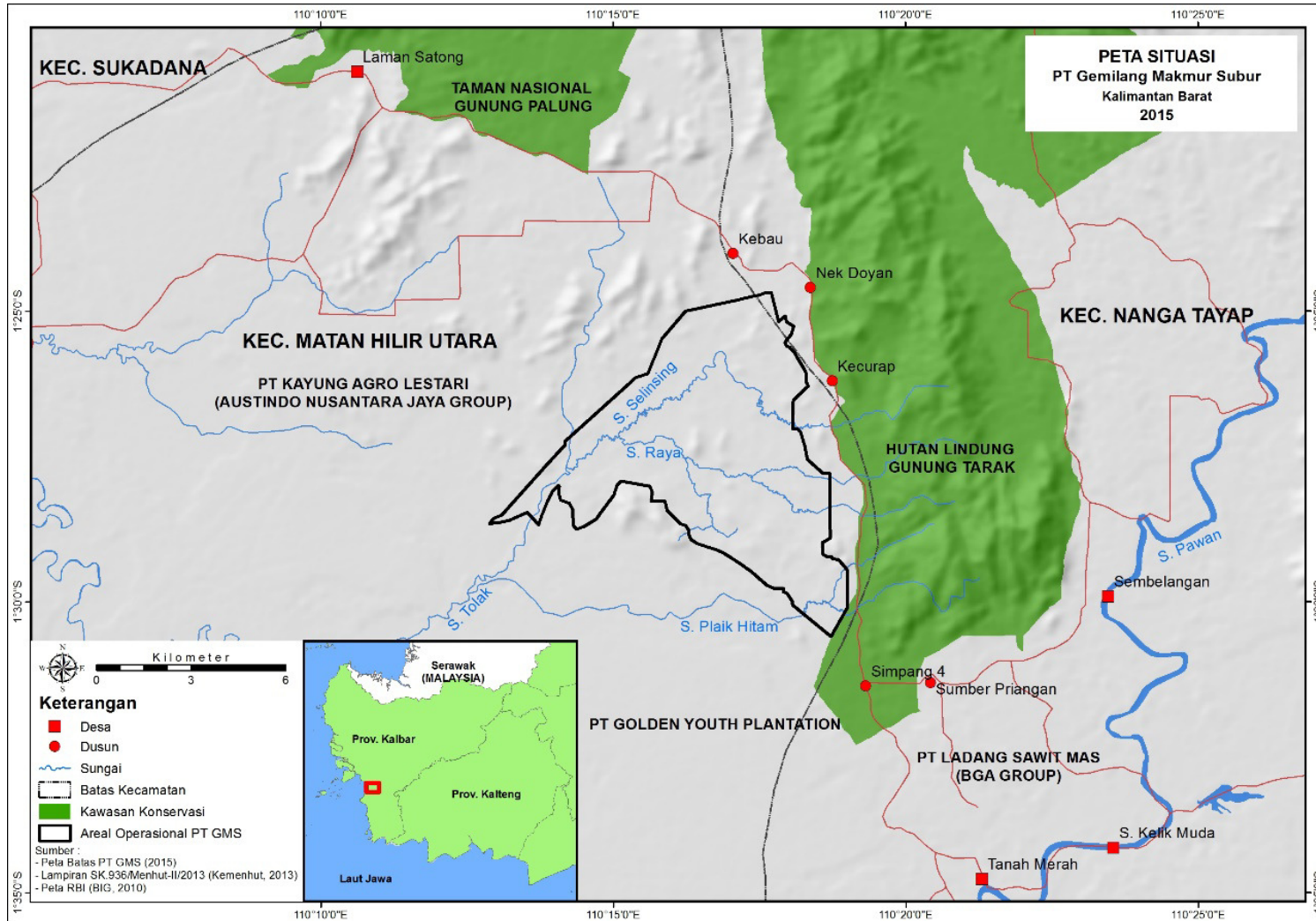
**Note :** \*). The planted areas planting from 2005 to 2008 and had not been subjected to RSPO NPP Procedure which was only implemented in January 2010. Road, ditches & infrastructure amount of 107 ha.

**Sources :**

- HCV assessment report on behalf PT Gemilang Makmur Subur year 2015 by PT Gagas DinamiGa Aksenta
- EIA document on behalf PT Gemilang Makmur Subur year 2015 by PT Delta Ekotrop Rayaindo
- LUCA report on behalf PT Gemilang Makmur Subur before correction & correction January 2017 by PT Gagas DinamiGa Aksenta
- Land use map (Landsat 8 OLI date October 2015)
- Spatial reference for new planting areas based on self digitation

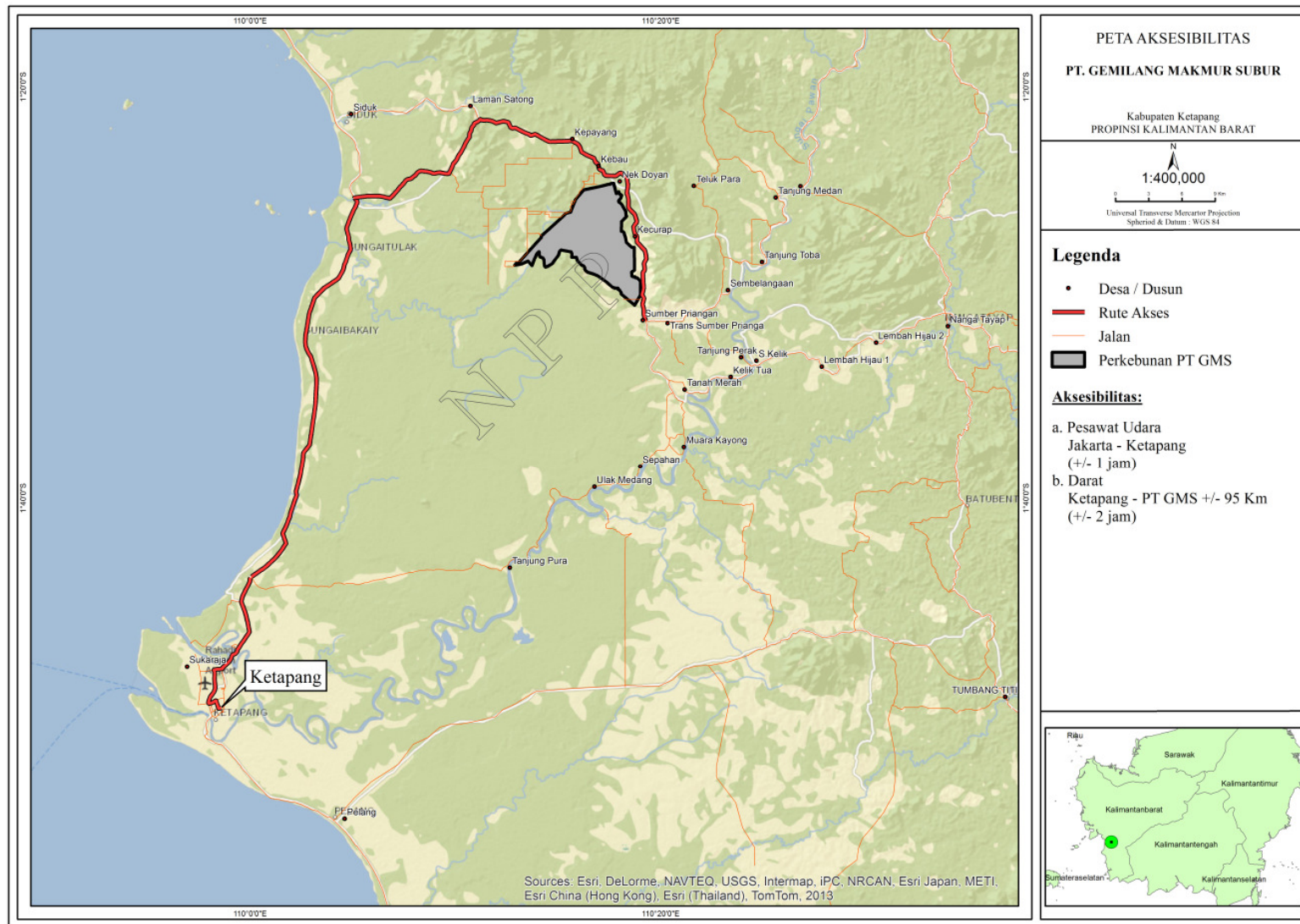
**RSPO New Planting Procedure Assessment Report**  
**PT Gemilang Makmur Subur – West Kalimantan Province, Indonesia**

Company's location :



**Figure 1.** Location of PT Gemilang Makmur Subur oil palm plantation on Ketapang District

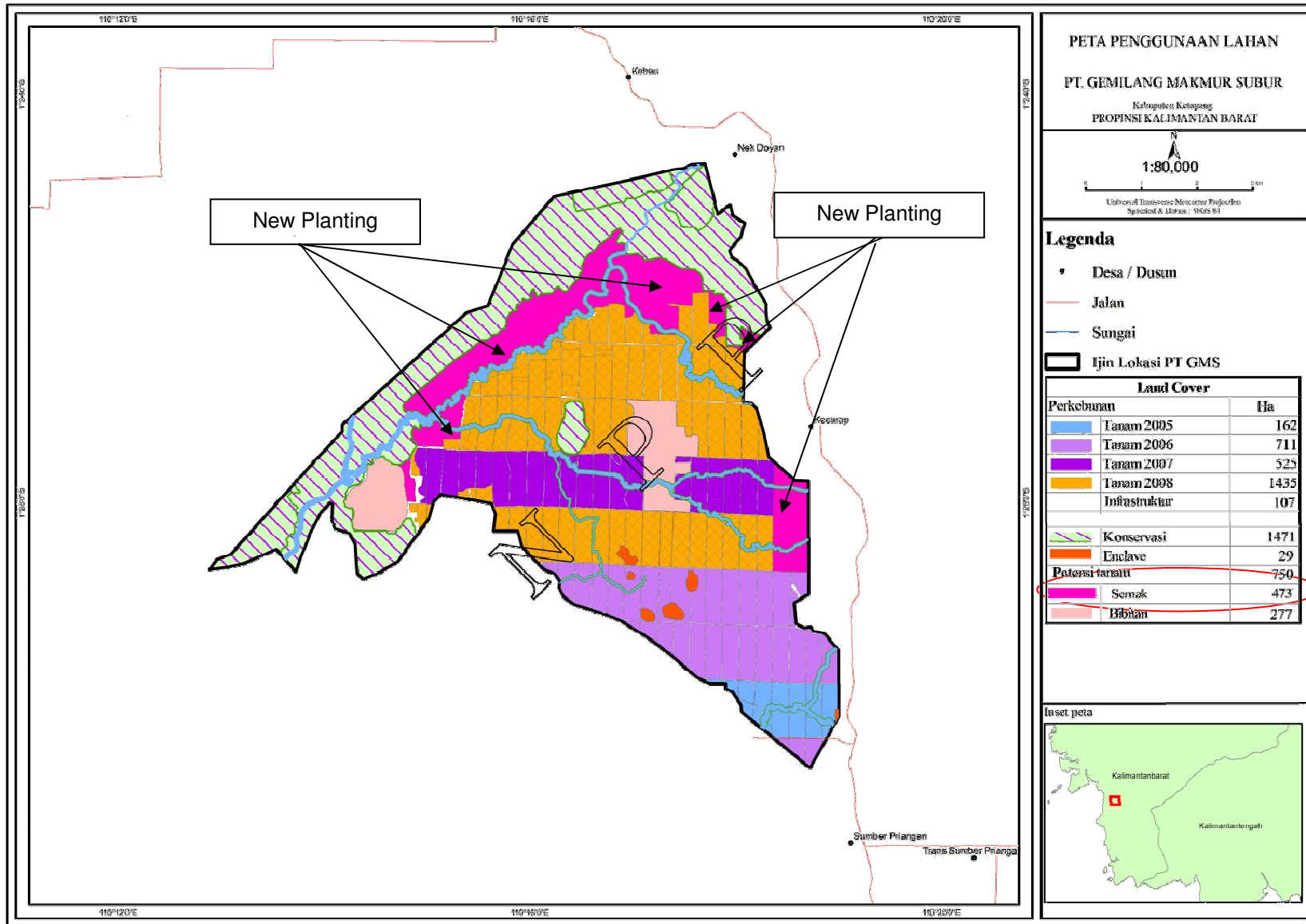
**RSPO New Planting Procedure Assessment Report**  
**PT Gemilang Makmur Subur – West Kalimantan Province, Indonesia**



**Figure 2.** Accessibility map from capital city in Ketapang District to location of PT Gemilang Makmur Subur oil palm plantation

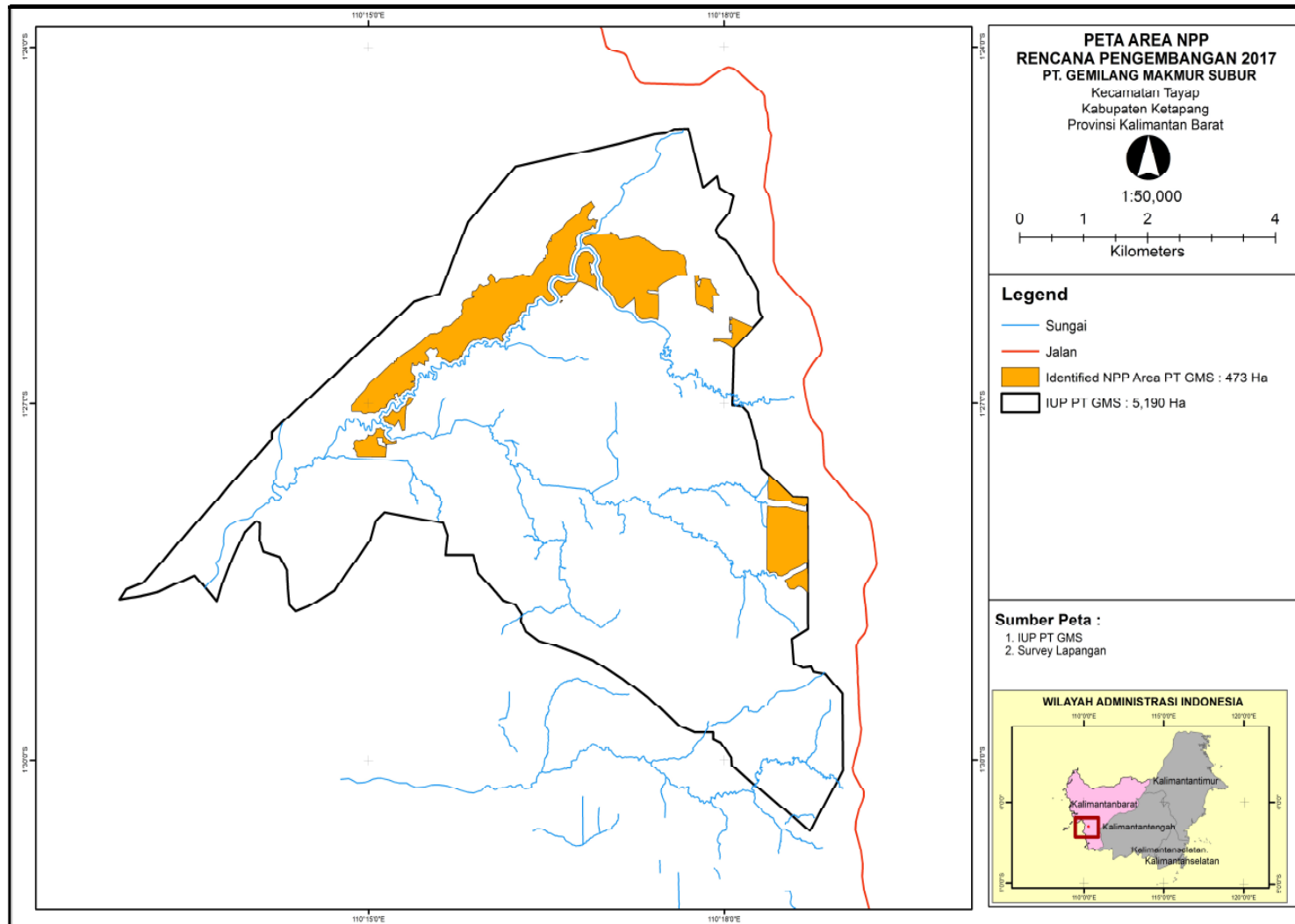


**RSPO New Planting Procedure Assessment Report**  
**PT Gemilang Makmur Subur – West Kalimantan Province, Indonesia**



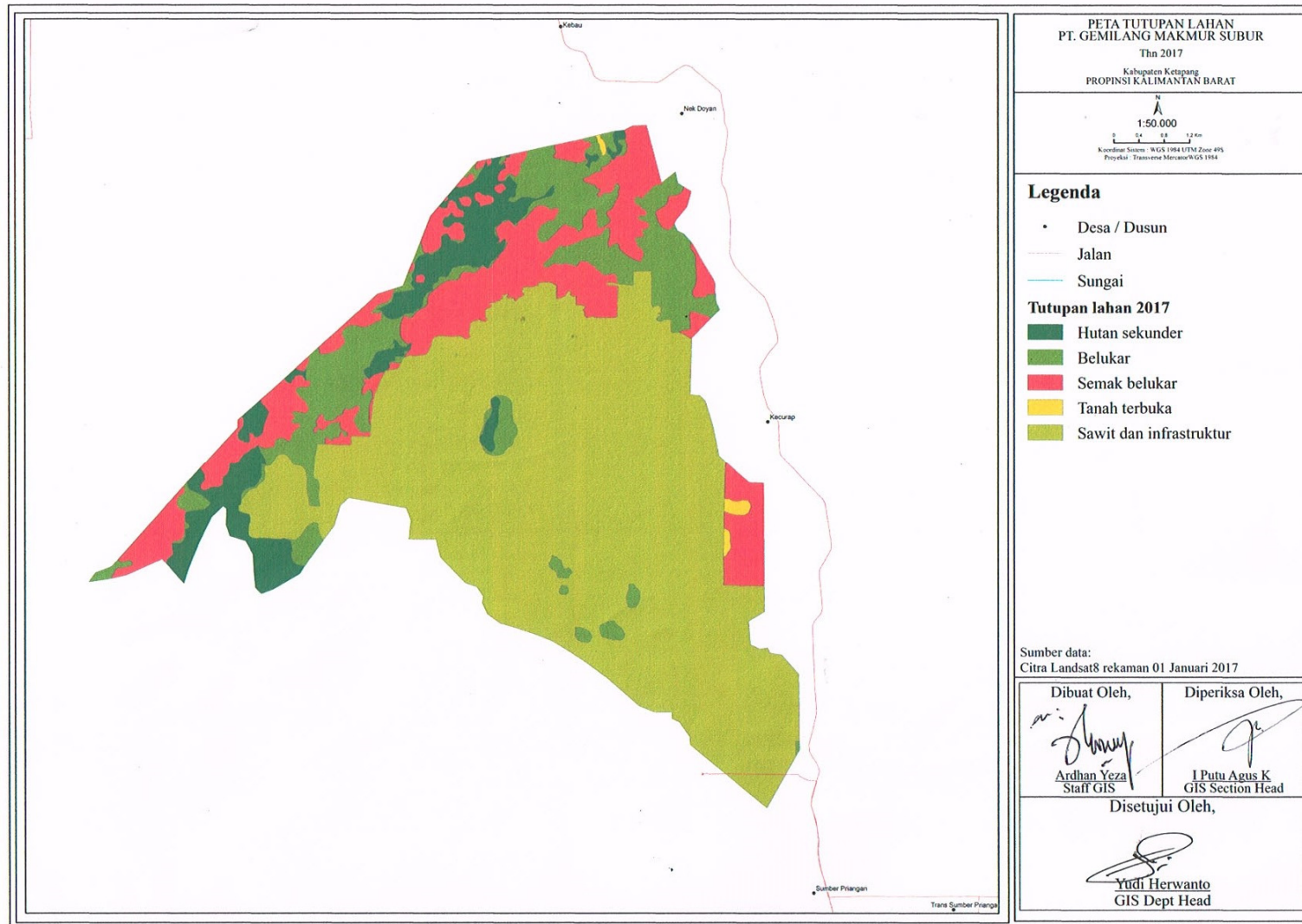
**Figure 3.a** Map of land use on PT Gemilang Makmur Subur areas

**RSPO New Planting Procedure Assessment Report**  
**PT Gemilang Makmur Subur – West Kalimantan Province, Indonesia**



**Figure 3.b** Map of NPP areas on PT Gemilang Makmur Subur areas

**RSPO New Planting Procedure Assessment Report**  
**PT Gemilang Makmur Subur – West Kalimantan Province, Indonesia**



**Figure 4.** Map of land cover on PT Gemilang Makmur Subur areas per January 2017



## **VERIFICATION STATEMENT By CERTIFICATION BODY (CB) :**

PT Gemilang Makmur Subur (PT GMS) opted for document verification & field visit to conduct the New Planting Procedure (NPP). The auditor team are Hendra Fachrurozy (legal land & company aspect, HCV aspect, EIA aspect) and Panggading H. Nainggolan (SIA aspect). Audit team from TUV Rheinland Indonesia have conducted desk study and field visit dated on 20-22 June 2016 and updating information & re-checking or re-verifying dated on :

- 9 December 2016 regarding environmental document has completed, one of compensation records & the result of HCV report evaluation by HCV-RN,
- 23 January 2017 regarding revision of LUCA report & land cover per January 2017,
- 14 March 2017 regarding revision of summary of assessment, management plan,
- 4 May 2017 regarding reviewing calculation of GHG emission and management & mitigation plan for soil and topography and
- 21 June 2017 regarding revision of some sentences on assessment summaries & management plans (paragraph which below table 21 or above table 22).

On November 2015, total of oil palm planted areas is **3,217.60 ha** and based on table 18 & 19 (assessment summarize of management plan) that there are change of land cover from other oil palm to oil palm so that the company have above year of planting 2010. It has not gone through the NPP process so that sanction is applied to company.

The GMS has legal right to use the land for new planting process because have location permit, and plantation business permit from local government and during field visit, PT GMS has carried out land compensation for some lands and the rest is still negotiation process between company and community relate of land compensation so that it is sufficient for an adequate FPIC process.

The GMS has complied RSPO NPP requirement (Nov 2015) where it has conducted activities below :

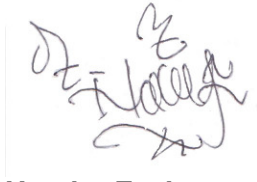
- The Social Impact Assessment (SIA), Land Use Change Analyst (LUCA) and carbon stock assessment and greenhouse gas emission calculation by professional person which have competency requirement from PT Gagas DinamiGa Aksenta.
- The Environmental Impact Assessment (EIA) by professional person which have competency requirement from PT Delta Ekotrop Rayaindo and has approved by local government.
- The HCV assessment by professional person which have competency requirement from PT Gagas DinamiGa Aksenta with lead assessor have ALS license and has evaluated by HCV-RN with satisfactory status on 25 October 2016.
- Land compensation and acquisition process.

and based on **figure 4** above, it has committed they will not land clearing till NPP announcement complete.

The result of verification in field and interview with stakeholders has explained on assessment summarize and management plan for each issue/section.

The opinion of TUV Rheinland's auditor about NPP process on behalf PT GMS is recommendation submit notification to RSPO secretariat.

**Signed on behalf of  
PT TUV Rheinland Indonesia**

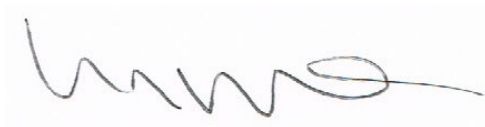


**Hendra Fachrurozy  
Lead Auditor  
Date : June 21, 2017**

**STATEMENT of ACCEPTANCE of RESPONSIBILITY for NPP :**

On behalf of the company, I acknowledge the necessary assessments have been done and completed in accordance to the NPP and the responsibilities of the company to implement the management and mitigations plans.

**Signed on behalf of the company,  
PT GEMILANG MAKMUR SUBUR**



**Lim Sian Choo  
Management Representative  
Date : June 21, 2017**