

A large wireframe globe and a smaller teardrop-shaped wireframe are rendered in a glowing green and yellow color scheme against a dark green background with floating particles. The globe is positioned in the upper left, and the teardrop is in the lower left.

RT2024 | PARTNERS FOR THE
AN EVENT BY RSPO | Next27

REGIONAL PATHWAYS TO SUSTAINABLE PALM OIL PRODUCTION

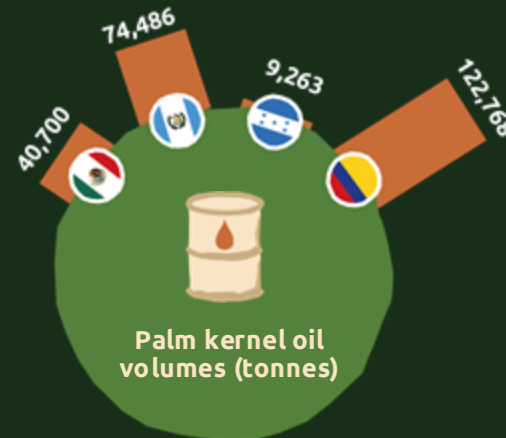
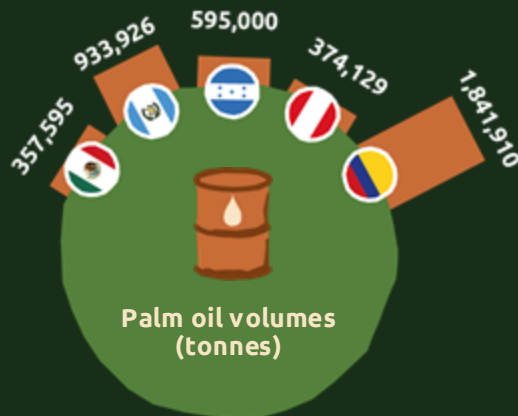
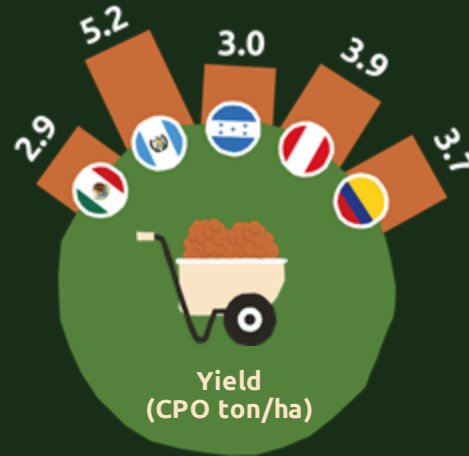
LATIN AMERICA

Solidaridad

Solidaridad

REGIONAL PATHWAYS TO SUSTAINABLE PALM OIL PRODUCTION

LATIN AMERICA



Latin American palm oil represents about **7.6%** of the global market. This is a smaller share of the crop globally, but...

It has grown significantly in recent years.



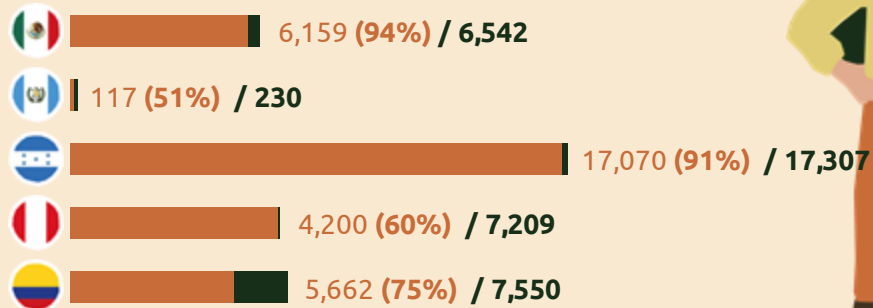
It has benefits that includes higher incomes, economic stability, job creation, implementation of sustainable practices.



Palm oil cultivation does not significantly contribute to deforestation. **Less than 5%**

Farmers

Smallholders / Total



Average area per producer

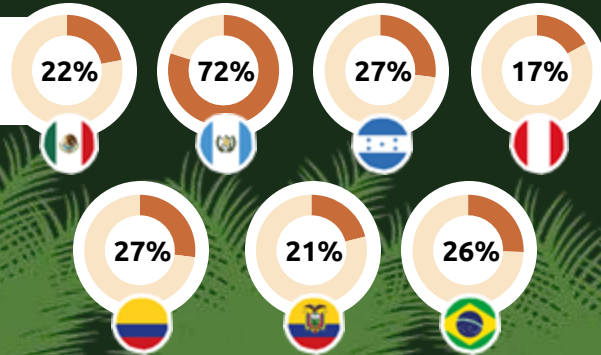
Smallholders





Latin America has been one of the fastest growing regions in adopting the Roundtable on Sustainable Palm Oil (RSPO) certification.

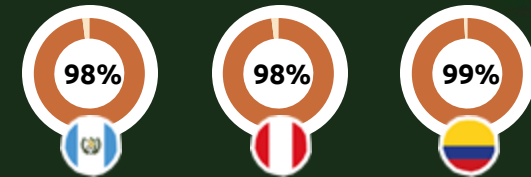
RSPO Certified
% tonnes/ total
production volume



Smallholders farmers
included in RSPO
(certified)



% of plantations
deforestation-free

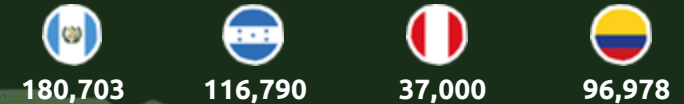


Total conservation
liability (hectares)

13.593 Ha



Total jobs



Female workers as a
percentage of total
workers employed
in certified mills

