

Jakarta, 4th July 2024

Dear Sir/Madam,

STAKEHOLDER CONSULTATION INVITATION TO COMMENT ON RSPO (P&C) INITIAL AUDIT

We are pleased to invite you to provide comments in the stakeholder consultation meeting.

PT. Pesonalintas Surasejati (Safir POM) has applied to Global Gateway Certifications Sdn Bhd to carryout initial certification activities in accordance with the Roundtable on Sustainable Palm Oil (RSPO P&C) standards.

The standards that shall be applied in the assessment are as below;

- RSPO Principle & Criteria Certification (RSPO P&C 2018) – Indonesia National Interpretation (INANI) April 2020

As scheduled, the initial assessment will be carried out on **02nd – 07th September 2024**. You are cordially invited to send any comments if applicable within the period from now until the closing meeting on the last day of the assessment.

Applicant	PT. Pesonalintas Surasejati (Safir POM) is a subsidiary of PT. Eagle High Plantations Tbk
RSPO Membership Number	1-0048-08-000-00
RSPO Palmtrace (RSPO PO_ID)	RSPO_PO1000006230

Contact details	<p>Budi Tri Prasetya sustainability@eaglehighplantations.com</p> <p>Tel : +62 21 86658828</p> <p>Address : Rajawali Place, 28th Floor, Jl. HR Rasuna Said Kav.B/4, RT 003 RW 07, Setiabudi Village, Setiabudi Sub-District, Jakarta Selatan District, DKI JakartaProvince</p>
------------------------	--

Brief business information of applicant	PKS Safir – PT. Pesonalintas Surasejati is a subsidiary of PT. Eagle High Plantations Tbk, was located on Magalau Hilir Village, Kelumpang Barat Sub-District, Kotabaru District, Kalimantan Selatan Province, Indonesia
--	--

PALM OIL MILL (POM) FOR THIS ASSESSMENT

Name of Palm Oil Mill (POM)	Mill Capacity MT/H R	Supply Chain Model	Location Address	GPS reference		Forecasted Annual output (MT)	
				Longitude	Latitude	CPO	Palm Kernel
PKS Safir	45	MB	Magalau Hilir Village, Kelumpang BaratSub-District, Kotabaru District, Kalimantan Selatan Province	E 116° 22' 26"	S 02° 37' 48.60"	6,259.00	1,108.00

Note : Installed capacity 45 MT/h of 60 MT/h permitted.



SUPPLY BASE OF FFB TO THE ABOVE POM TO BE INCLUDED IN THIS ASSESSMENT

Owned Oil Palm Plantation / Association	Address	GPS reference		Area Summary (Ha)		Annual FFB Production (MT)
		Longitude	Latitude	Total	Planted	
Kalimaya Estate (PT Karyapratama Agrisejahtera)	Desa Siayuh, Kecamatan Kelumpang Barat ,Kabupaten Kotabaru, Provinsi Kalimantan Selatan	E 116° 04' 45"	S 00° 25' 05"	1,806.00	1,519.10	26,080.00
TOTAL				1,806.00	1,519.10	26,080.00

Stakeholder consultation is one of the most important parts in certification process; during which relevant national, regional as well as local stakeholders are asked to give their views and opinions as to whether the applicant's certification units comply with the requirements of the RSPO's requirements.

We invite all stakeholders to take part in this consultation process as you can make a positive contribution to the certification decision. We invite you to raise any issues, both positive and negative, by sending a written response by mail, fax or by e-mail to our Global Gateway Certifications Sdn Bhd.

For your guidance, you may consider the following points:

- Environmental protection.
- Biodiversity conservation.
- Opportunities for employment.
- Provision of housing, sanitation, amenities and educational support.
- Company approach to community development.
- Participation in decision making.
- Any other issue, both positive and negative that you consider may be of relevance to the assessment.

Please direct your comments to:

Global Gateway Certifications Sdn Bhd

Scheme Manager,
Global Gateway Certifications Sdn Bhd,
No.10, Jalan Rasmi 7,
Taman Rasmi Jaya,
68000 Ampang,
Selangor Darul Ehsan, Malaysia.

Telephone: +60 3 4256 2689

Fax: +60 3 4256 2687

Email: jamal@ggc.my / admin@ggc.my



Details on the audit team:

Naik Monang Parlindungan Lingga (Lead Auditor)

Bachelor's graduate of Forest Management in Gajah Mada University, Yogyakarta with more than 16 years of experience in various work scopes covering palm oil plantation, environmental, HCV, safety and health and supply chain. Also, having more than 11 years of experience as an Lead Auditor/Auditor in various scheme audits such as ISPO and RSPO P&C and SC. Attended and successfully completed the RSPO P&C Lead Auditor certification course conducted in September 2015, RSPO SC in April 2016, ISPO in June 2013. Successfully completed the ISO 45001:2018, ISO 14001:2015 & ISO 9001:2015 Management System course for the Lead Auditor in December 2021, October 2014 & May 2013. Also successfully completed the GHG calculation in palm oil plantation in March 2014, Technical assessment of HCV in April 2014 and ISO 37001 in June 2018. Can speak and understand Indonesian and English

Dwi Haryati (Auditor)

Bachelor's graduate of Jendral Soedirman State University, Purwokerto with more than 11 years of experience in various work scopes covering worker plantation, safety and health. Also, having more than 10 years of experience as an Auditor in various scheme audits such as ISO 9001, ISPO and RSPO P&C. Attended and successfully completed the RSPO Lead Auditor certification course conducted in November 2017 & refreshment RSPO P&C 2018 training in February 2024. Successfully completed the ISO 45001:2018 OSH, ISO 14001:2015 & ISO 9001:2015 Management System course for the Lead Auditor in February 2023, December 2022 & March 2022. Also completed OSH Management System based on PP No.50 Year 2012 training (by Ministry of Manpower) & refreshment training for OSH expert by Ministry of Manpower in 2022. Registered OSH Officer and expert in OSH in plantation and milling industry. Can speak and understand Indonesian and English.

Hendra Fachrurozy (Auditor)

Bachelor's graduate of Forest Management in Bogor Agriculture University with more than 24 years of experience in various work scopes covering palm oil plantation, assessment, farmacy, environmental, HCV, occupation, safety and health, electricity, social and supply chain. Also, having more than 22 years of experience as an Lead Auditor/Auditor in various scheme audits such as ISPO, RSPO P&C, ISH and SC, Social for RSPO standard, ISO 9001, ISO14001, ISO45001, FSM (Mandatory), SVLK, CHSE, ISCC, etc. Attended and successfully completed the RSPO P&C Lead Auditor certification course conducted in April 2011 & latest refreshment in June 2023, RSPO SC in September 2012 & latest refreshment in March 2020, ISPO in March 2012 & latest refreshment in March 2021, RSPO RED training in January 2013, Social auditing training for RSPO P&C in December 2021, RISS training for CB in March 2022 and ISCC basic training in December 2019. Successfully completed the Lead Auditor training for ISO 9001:2008 in February 2011 & latest refreshment in March 2022, ISO 14001 in November 2011, OSH (Mandatory) training for auditor in year 2009, internal training for SMETA 6.1 (4 pillar) in September 2023. Also successfully completed the GHG calculation in palm oil plantation in March 2014. Can speak and understand Indonesian and English

Burhanuddin Gala (Auditor)

Bachelor's graduate of antropology. He has attended some trainings i.e Roundtable Sustainable Palm Oil (RSPO) Lead Auditor Course, Indonesian Sustainable Palm Oil (ISPO) Lead Auditor Course, Environmental Impact Assessment (EIA), High Conservation Value Forest/Area (HCVF/A), Social Impact Assessment (SIA), Standard LEI 5000- 1/5000-2/5000-3, Sustainable Forest Management Certification (PHPL), Timber Legality Verification (SVLK), T-Bosiet Course with guidance set by IMO/STCW95, UKOOA, OPITO, OGP, NFPA & AHA. He also has work experience such as i.e a Researcher and non-permanent lecturer at Anthropology Departement, Faculty of Social and Political Science, University of Indonesia. Can speak and understand Indonesian and English



Comments received within 30 days from the date of this letter will be considered in this Assessment. Please include the following information should we need to contact you for clarification on any issues raised:

Name : _____
Address : _____
E-Mail : _____
Phone Number : _____
Summary of Issue : _____

Comment:

If you wish your comments to be treated confidentially or remain anonymous, please mark your reply “CONFIDENTIAL”. We

thank you for the participation and feedback.

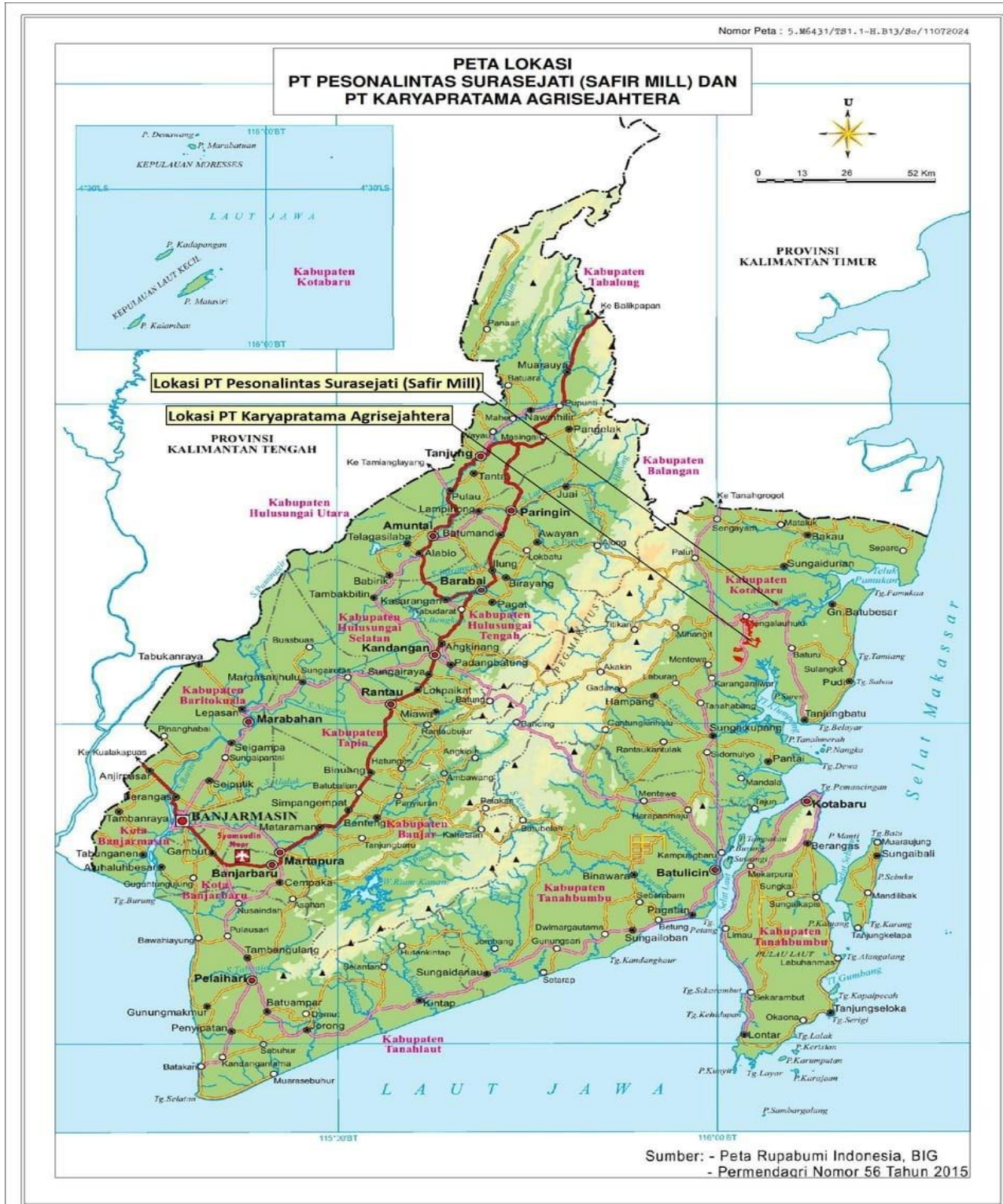
Yours Sincerely,



Muhd Jamalul Arif,
Scheme Manager,
Global Gateway Certifications Sdn Bhd



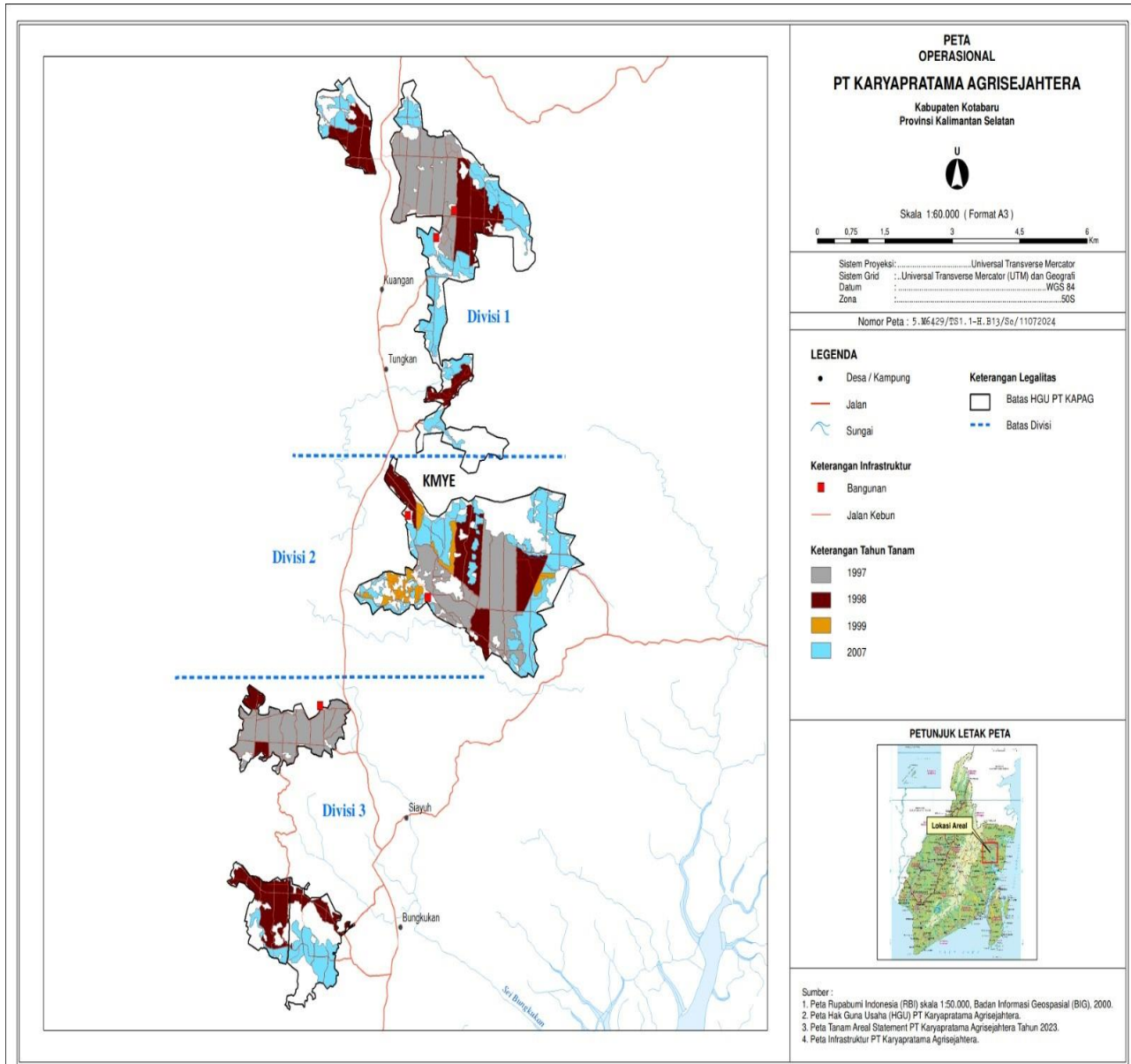
Annex 1 – Location Maps (Scope of HGU)



Annex 2 – Location Maps (Scope of RaCP)



Annex 3 – Operational Maps (Scope of HGU)



Annex 4 – Operational Maps (Scope of RaCP)

