

Jakarta, 23rd September 2025

Dear Sir/Madam,

STAKEHOLDER CONSULTATION INVITATION TO COMMENT ON RSPO (P&C) RECERTIFICATION AUDIT

We are pleased to invite you to provide comments in the stakeholder consultation meeting.

PT. Sahabat Mewah dan Makmur (Jangkang POM) subsidiary of PT Austindo Nusantara Jaya Agri has applied to Global Gateway Certifications Sdn Bhd to carryout recertification audit activities in accordance with the Roundtable on Sustainable Palm Oil (RSPO P&C) standards.

The standards that shall be applied in the assessment are as below;

- RSPO Principle & Criteria Certification (RSPO P&C 2018) – Indonesia National Interpretation (INANI) April 2020

As scheduled, the recertification assessment will be carried out on **3-8 November 2025**. You are cordially invited to send any comments if applicable within the period from now until the closing meeting on the last day of the assessment.

Applicant	PT. Sahabat Mewah dan Makmur (Jangkang POM) subsidiary of PT Austindo Nusantara Jaya Agri
RSPO Membership Number	1-0032-07-000-00
RSPO Palmtrace (RSPO PO_ID)	-

Contact details	Bambang Dwi Laksono bambang.dwilaksono@first-resources.com Tel : +62 21 29298888 Address : APL Tower Central Park, Lantai 28, Podomoro City, Jl. Letjend S.Parman Kav.28, Tanjung Duren Selatan Village, Grogol Petamburan Sub District, Jakarta Barat District, DK Jakarta Province, Indonesia
------------------------	---

Brief business information of applicant	Jangkang POM – PT. Sahabat Mewah dan Makmur is a subsidiary of PT Austindo Nusantara Jaya Agri was located on Dendang Sub District, Belitung Timur District, Kepulauan Bangka Belitung Province, Indonesia. There is a RaCP so have a compensation and/or remediation plan approved by RSPO.
--	--

PALM OIL MILL (POM) FOR THIS ASSESSMENT

Name of Palm Oil Mill (POM)	Mill Capacity MT/HR	Supply Chain Model	Location Address	GPS reference		Forecasted Annual output (MT)	
				Longitude	Latitude	CPO	Palm Kernel
Jangkang POM	60	MB	Jangkang Village, Dendang Sub District, Belitung Timur District, Kepulauan Bangka Belitung Province, Indonesia	107.879167 °	-2.991389 °	54,200.00	12,230.00

SUPPLY BASE OF FFB TO THE ABOVE POM TO BE INCLUDED IN THIS ASSESSMENT

Owned Oil Palm Plantation / Association	Address	GPS reference		Area Summary (Ha)		Annual FFB Production (MT)
		Longitude	Latitude	Total	Planted	
Jangkang	Jangkang Village, Dendang Sub District, Belitung Timur District, Kepulauan Bangka Belitung Province, Indonesia	107.879167 °	-2.991389°	3,592.95	2,916.51	60,668.41
Balok	Balok Village, Dendang Sub District, Belitung Timur District, Kepulauan Bangka Belitung Province, Indonesia	107.915556 °	-3.033889°	3,274.46	2,860.77	40,135.57
Joseph Jaya	Jangkang Village, Dendang Sub District, Belitung Timur District, Kepulauan Bangka Belitung Province, Indonesia	107.891388°	-2.959722°	2,195.83	2,102.87	50,984.93
Sari Bunga	Nyuruk Village, Dendang Sub District, Belitung Timur District, Kepulauan Bangka Belitung Province, Indonesia	107.883611°	-2.945000°	2,327.55	2,066.31	48,020.85
Air Ruak	Simpang Tiga Village, Simpang Renggang Sub District, Belitung Timur District, Kepulauan Bangka	107.893333°	-2.915555°	4,886.08	4,331.63	53,255.31

	Belitung Province, Indonesia					
Mitra Lestari Cooperative Unit (44 smallholders)	Dendang Village, Dendang Sub District, Belitung Timur District, Kepulauan Bangka Belitung Province, Indonesia	107.911944°	-3.091888°	55.79	55.79	1,316.68
Mitra Anugrah Cooperative Unit (31 smallholders)	Simpang Tiga Village, Simpang Renggang Sub District, Belitung Timur District, Kepulauan Bangka Belitung Province, Indonesia	107.942250°	-2.871722°	52.86	52.86	937.15
Sambar Jaya Makmur Cooperative Unit (35 smallholders)	Birah Pesak Village, Simpang Pesak Sub District, Belitung Timur District, Kepulauan Bangka Belitung Province, Indonesia	107.992916°	-3.059333 °	70.53	70.53	1,940.24
Berhimpun Sejahtera Cooperative Unit (32 smallholders)	Kelumpang Village, Dendang Sub District, Belitung Timur District, Kepulauan Bangka Belitung Province, Indonesia	108.012794°	-3.188176°	64.90	64.90	1,634.17
Lindong Raya Cooperative Unit (240 smallholders)	Limbungan Village, Gantung Sub District, Belitung Timur District, Kepulauan Bangka Belitung Province, Indonesia	108.060638°	-3.081916°	511.00	390.45	7,268.36
Gunung Nyerudong Sejahtera Cooperative (145 smallholders)	Renggang Village, Simpang Renggang Sub District, Belitung Timur District, Kepulauan Bangka Belitung Province, Indonesia	108.100583 °	-3.086888°	156.05	154.07	3,269.98
Tiong Sejahtera Cooperative (49 smallholders)	Lilangan Village, Gantung Sub District, Belitung Timur District, Kepulauan Bangka Belitung Province, Indonesia	108.016138°	-3.195000°	66.11	66.11	1,644.17

BUMDES Balok Tebing Tinggi (1 smallholder)	Balok Village, Dendang Sub District, Belitung Timur District, Kepulauan Bangka Belitung Province, Indonesia	107.907888°	-3.048027°	29.41	29.41	630.25
TOTAL				17,283.71	15,162.21	270,951.24

Stakeholder consultation is one of the most important parts in certification process; during which relevant national, regional as well as local stakeholders are asked to give their views and opinions as to whether the applicant's certification units comply with the requirements of the RSPO's requirements.

We invite all stakeholders to take part in this consultation process as you can make a positive contribution to the certification decision. We invite you to raise any issues, both positive and negative, by sending a written response by mail, fax or by e-mail to our Global Gateway Certifications Sdn Bhd.

For your guidance, you may consider the following points:

- Environmental protection.
- Biodiversity conservation.
- Opportunities for employment.
- Provision of housing, sanitation, amenities and educational support.
- Company approach to community development.
- Participation in decision making.
- Any other issue, both positive and negative that you consider may be of relevance to the assessment.

Please direct your comments to:

Global Gateway Certifications Sdn Bhd

Scheme Manager,
Global Gateway Certifications Sdn Bhd,
No.10, Jalan Rasmi 7,
Taman Rasmi Jaya,
68000 Ampang,
Selangor Darul Ehsan, Malaysia.

Telephone: +60 3 4256 2689

Fax: +60 3 4256 2687

Email: jamal@ggc.my / admin@ggc.my

Details on the audit team:

Dewi Akbari (Lead Auditor)

Graduate in Agriculture Science and Agribusiness from University Sriwijaya with more than 20 years of experience in various work scopes covering auditing, inspection and certification consultant. Also, having more than 14 years of experience as an Auditor / Lead Auditor in audit schemes such as ISPO and RSPO P&C/RSPO SCCS. Attended and successfully completed the RSPO Lead Auditor certification refresher course conducted in July 2022. Successfully completed the ISO 9001 Quality Management System (QMS) course for Lead Auditors in 2009. Also completed the RSPO ISH training in March 2022. Successfully completed the SA8000 – Auditor and RSPO ISH Training on 16 March 2022. Understand the law – Indonesian local laws. Can speak and understand Indonesian and English.

Dwi Haryati (Auditor)

Bachelor of Science graduate, Faculty of Agriculture/Agronomy with more than 10 years of work experience. Also has audit experience of around 188 companies for ISPO, RSPO and SMK3 audit schemes and several companies for the latest ISO 9001 audit scheme. Has attended and successfully completed various Lead Auditor certification courses such as RSPO P&C, CQIIRCA ISO 45001:2018, CQI-IRCA ISO 14001:2015, CQI-IRCA ISO 9001:2015, CQI-IRCA ISO 22000:2018, completed ISH RSPO training on April 9-10, 2025 and attended various trainings. Can speak and understand Indonesian and English.

Harso Yuli Antena (Auditor)

Graduate in Social and Economic Science, Faculty of Agriculture, Bogor Agricultural Institute with more than 10 years of experience in various work scopes covering forestry and environment. Also, having more than 5 years of experience as an Auditor / Lead Auditor in various audit schemes such as PHPL/PHTL, ISPO and RSPO P&C/RSPO SCCS. Attended and successfully completed the RSPO Lead Auditor certification course conducted in February 2022. Successfully completed the ISO 14001:2018 Environmental Management System course for Lead Auditors in 2014. Also completed the Social Accountability - SA 8000 training in April 2023 and RSPO ISH Training on 16 March 2022. Understand the law – Indonesian local laws. Can speak and understand Indonesian and English.

Iman K Nawireja (Auditor)

Dr Nawireja is an expert in social and environmental audit issues, with wide experience throughout Indonesia, Malaysia, and Papua New Guinea (PNG), working with local communities and multinational corporations. Dr Nawireja has more than 20 years of working experience and has been involved in many RSPO/ISPO audits in Indonesia, Malaysia, and PNG, as well as Environmental Audit Impact Assessment Projects (EIA) and other social development projects. He has a combination of a BSc degree from one of the most reputable universities in Indonesia, a further Master's in Communication, and a PhD in Social Sciences, which provides him with extensive and multi-disciplinary capabilities. He is also has attend social auditor (SA8000)n training. Also completed the RSPO ISH training in March 2022.

Comments received within 30 days from the date of this letter will be considered in this Assessment. Please include the following information should we need to contact you for clarification on any issues raised:

Name : _____
Address : _____
E-Mail : _____
Phone Number : _____
Summary of Issue : _____

Comment:

If you wish your comments to be treated confidentially or remain anonymous, please mark your reply “CONFIDENTIAL”.

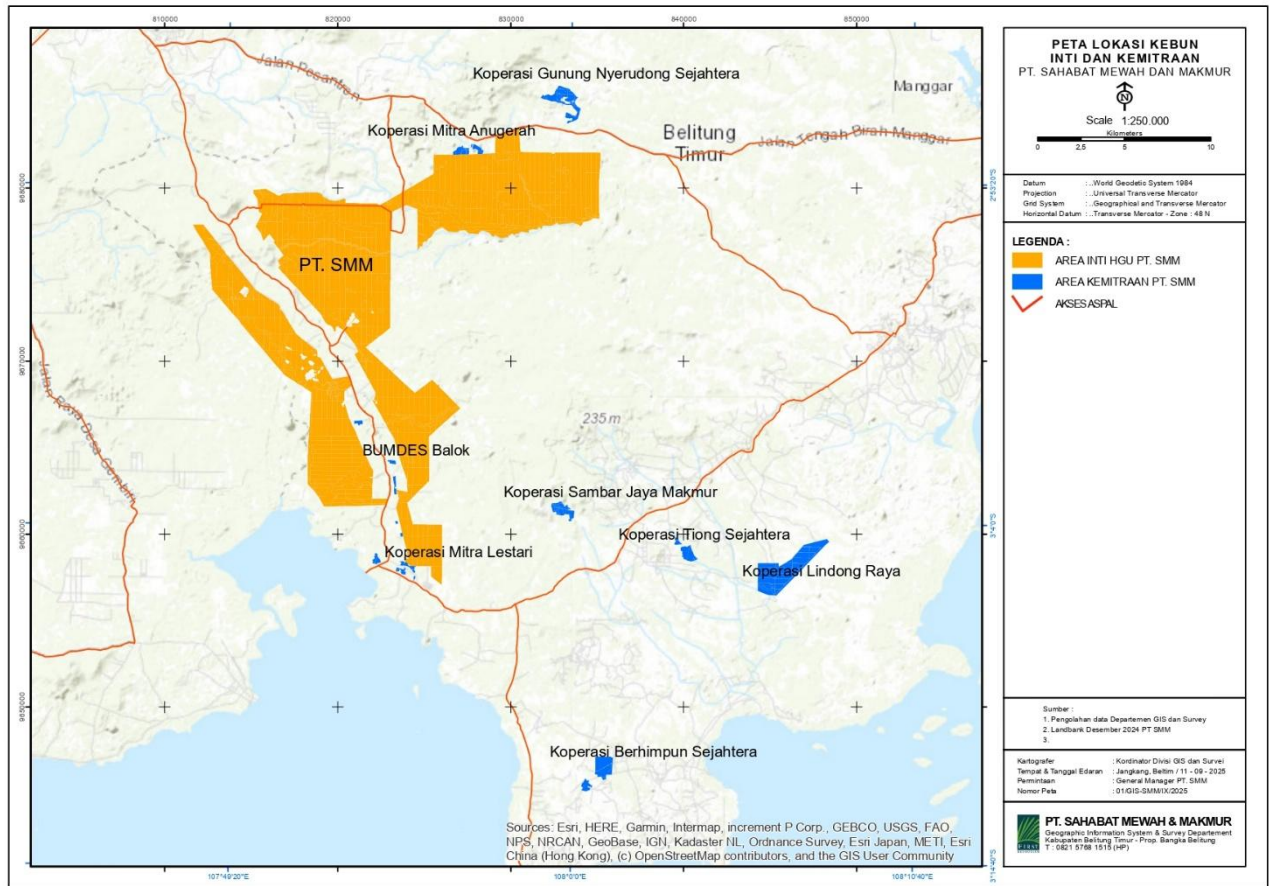
We thank you for the participation and feedback.

Yours Sincerely,



Muhd Jamalul Arif,
Scheme Manager,
Global Gateway Certifications Sdn Bhd

Annex 1 – Location Map



Annex 2 – Operational Map

